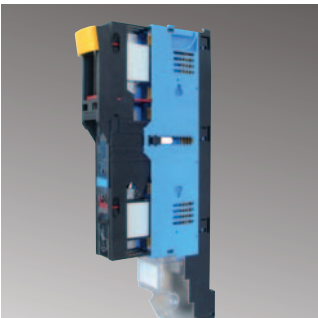


## Quality and Support

Secure pad-log-position



NH Fuse-Switches,  
vertical design, series R2000



NH Fuse-Switches,  
vertical design, series NTSL



NH Fuse-Switch, vertical design,  
size 4a, 1-pole switching





# Content

NH Fuse-Switches, vertical design, 1-pole or 3-pole switching	150
NH Fuse-Rails	156
Accessories	157
Technical data	see page 158

## System

EFEN with its long tradition as a producer of NH Fuse-Switches, vertical design, offers ideal solutions for different applications such as power distribution or the industry. Four different series offer many options.

The NTSL series offers a mature technology which is characterised through a product with high thermic and mechanical qualities. The R2000 series fullfils all specification for industrial applications. EKDEO and the NH Fuse-Rail, EDURO, are particularly designed for the requirements of the power utility companies.

## Features

All insulating parts are made of halogen-free, flame retardant polymers with excellent temperature performance. Due to a wide range of accessories mounting under voltage is possible.

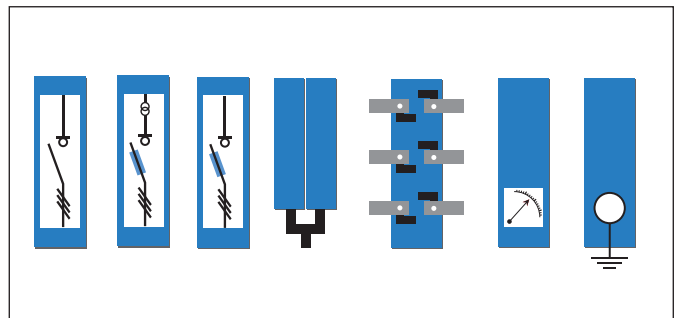
Series EDURO and EKDEO



non-contact unlocking of the the Fuse-Link



All Types



## NH Fuse-Switches, vertical design

 For more information  
 see page **157**


38500.0000

### NH Fuse-Switches, vertical design, size 00-3, 3-pole switching, terminal top/bottom selection

Description	Size	Amps	Order-No.	PU	PG	Sur. Ag	Sur. Cu	Price €/pc.
Pressure plate for 1,5 - 50mm <sup>2</sup>	00N	125	<b>38501.0000</b>	2	NSL 3	0,010	0,054	87,00
Multiple use terminal (screw M8) Directmounting on 60 mm busbar systems with hooks	00IN	160	<b>38534.1000</b>	2	NSL 00IN	0,013	0,087	54,00
Multiple use terminal (screw M8) Directmounting on 60 mm busbar systems with hooks	00IN	160	<b>38534.5000</b>	2	NSL 00IN	0,013	0,087	54,00
Multiple use terminal (screw M8)	00IN	160	<b>38544.0000</b>	2	NSL 00IN	0,013	0,070	49,00
Flat terminal M8	00N	160	<b>38500.0000</b>	2	NSL 3	0,010	0,054	85,00
Pressure plate with contact prism for 2,5 - 70mm <sup>2</sup>	00N	160	<b>38502.0000</b>	2	NSL 3	0,010	0,054	90,00
Threaded bolt M12 x 30	R2000 1	250	<b>38612.0020</b>	1	NSL 2	0,039	0,233	222,00
Inserted screw nut M12	R2000 1	250	<b>38614.0020</b>	1	NSL 2	0,039	0,233	222,00
V-stamped (Clamps not attached)	R2000 1	250	<b>38615.0020</b>	1	NSL 2	0,039	0,234	222,00
Threaded bolt M12 x 30	R2000 2	400	<b>38622.0020</b>	1	NSL 2	0,039	0,233	227,00
Inserted screw nut M12	R2000 2	400	<b>38624.0020</b>	1	NSL 2	0,039	0,233	227,00
V-stamped (Clamps not attached)	R2000 2	400	<b>38625.0020</b>	1	NSL 2	0,039	0,234	227,00
Threaded bolt M12 x 30	R2000 3	630	<b>38632.0020</b>	1	NSL 2	0,039	0,258	261,00
Inserted screw nut M12	R2000 3	630	<b>38634.0020</b>	1	NSL 2	0,039	0,258	261,00
V-stamped (Clamps not attached)	R2000 3	630	<b>38635.0020</b>	1	NSL 2	0,039	0,258	261,00



38614.1240

### NH Fuse-Switches, vertical design, size 1-3, 3-pole switching, series R2000, with mounting hooks

Description	Size	Amps	Order-No.	PU	PG	Sur. Ag	Sur. Cu	Price €/pc.
Threaded bolt M12x30	1	250	<b>38612.1240</b>		NSL 2	0,039	0,233	238,00
Inserted screw nut M12	1	250	<b>38614.1240</b>		NSL 2	0,039	0,233	238,00
V-stamped (Clamps not attached)	1	250	<b>38615.1240</b>		NSL 2	0,039	0,233	238,00
Threaded bolt M12x30	2	400	<b>38622.1240</b>		NSL 2	0,039	0,233	243,00
Inserted screw nut M12	2	400	<b>38624.1240</b>		NSL 2	0,039	0,233	243,00
V-stamped (Clamps not attached)	2	400	<b>38625.1240</b>		NSL 2	0,039	0,233	243,00
Threaded bolt M12x30	3	630	<b>38632.1240</b>		NSL 2	0,039	0,258	267,00
Inserted screw nut M12	3	630	<b>38634.1240</b>		NSL 2	0,039	0,258	275,00
V-stamped (Clamps not attached)	3	630	<b>38635.1240</b>		NSL 2	0,039	0,258	275,00

## NH Fuse-Switches, vertical design

 For more information  
 see page **157**


38520.0000

### NH Fuse-Switches, vertical design, size 00-4a, 1-pole switching, terminal top or bottom selection

Description	Size	Amps	Order-No.	PU	PG	Sur. Ag	Sur. Cu	Price €/pc.
For 185 mm <sup>2</sup> busbar systems, Multiple use terminal (screw M8)	00N	160	<b>38520.0000</b>	2	NSL 3	0,012	0,071	113,00
For 185 mm <sup>2</sup> busbar systems, V-clamps 25 - 30 mm <sup>2</sup>	00N	160	<b>38525.0600</b>	2	NSL 3	0,012	0,105	156,00
Threaded bolt M12 x 30	R2000 1	250	<b>38612.0000</b>	1	NSL 2	0,039	0,233	222,00
Inserted screw nut M12	R2000 1	250	<b>38614.0000</b>	1	NSL 2	0,039	0,233	222,00
V-stamped (Clamps not attached)	R2000 1	250	<b>38615.0000</b>	1	NSL 2	0,039	0,233	222,00
Threaded bolt M12 x 30	R2000 2	400	<b>38622.0000</b>	1	NSL 2	0,039	0,233	227,00
Inserted screw nut M12	R2000 2	400	<b>38624.0000</b>	1	NSL 2	0,039	0,233	227,00
V-stamped (Clamps not attached)	R2000 2	400	<b>38625.0000</b>	1	NSL 2	0,039	0,234	227,00
Threaded bolt M12 x 30	R2000 3	630	<b>38632.0000</b>	1	NSL 2	0,039	0,258	261,00
Inserted screw nut M12	R2000 3	630	<b>38634.0000</b>	1	NSL 2	0,039	0,258	261,00
V-stamped (Clamps not attached)	R2000 3	630	<b>38635.0000</b>	1	NSL 2	0,039	0,258	261,00
Flat terminal M16, terminal bottom	4a	1250	<b>38400.0000</b>	1	NSL 3	0,133	1,120	724,00
Flat terminal M16, terminal top	4a	1250	<b>38450.0000</b>	1	NSL 3	0,133	1,120	724,00
Flat terminal 2xM12, terminal bottom	4a	1600	<b>38400.0020</b>	1	NSL 3	0,133	1,134	956,00
Flat terminal 2xM12, terminal top	4a	1600	<b>38450.0020</b>	1	NSL 3	0,133	1,134	956,00



38614.1230

### NH Fuse-Switches, vertical design, size 1-3, 1-pole switching, series R2000, with mounting hooks

Description	Size	Amps	Order-No.	PU	PG	Sur. Ag	Sur. Cu	Price €/pc.
Threaded bolt M12x30	1	250	<b>38612.1230</b>		NSL 2	0,039	0,233	238,00
Inserted screw nut M12	1	250	<b>38614.1230</b>		NSL 2	0,039	0,233	238,00
V-stamped (Clamps not attached)	1	250	<b>38615.1230</b>		NSL 2	0,039	0,233	238,00
Threaded bolt M12x30	2	400	<b>38622.1230</b>		NSL 2	0,039	0,233	243,00
Inserted screw nut M12	2	400	<b>38624.1230</b>		NSL 2	0,039	0,233	243,00
V-stamped (Clamps not attached)	2	400	<b>38625.1230</b>		NSL 2	0,039	0,233	243,00
Threaded bolt M12x30	3	630	<b>38632.1230</b>		NSL 2	0,039	0,258	267,00
Inserted screw nut M12	3	630	<b>38634.1230</b>		NSL 2	0,039	0,258	275,00
V-stamped (Clamps not attached)	3	630	<b>38635.1230</b>		NSL 2	0,039	0,258	275,00

## NH Fuse-Switches, vertical design

 For more information  
 see page **157**


38624.0170

### NH Fuse-Switches, vertical design, size 1-3, 1-pole or 3-pole switching, Series R2000 for horizontal mounting

Description	Size	Amps	Order-No.	PU	PG	Sur. Ag	Sur. Cu	Price €/pc.
Inserted screw nut M12, 3-pole switching	1	250	<b>38614.0170</b>	1	NSL 2	0,039	0,233	239,00
Inserted screw nut M12, 1-pole switching	1	250	<b>38614.0180</b>	1	NSL 2	0,039	0,233	239,00
Inserted screw nut M12, 3-pole switching	2	400	<b>38624.0170</b>	1	NSL 2	0,039	0,233	245,00
Inserted screw nut M12, 1-pole switching	2	400	<b>38624.0180</b>	1	NSL 2	0,039	0,233	245,00
Inserted screw nut M12, 3-pole switching	3	630	<b>38634.0170</b>	1	NSL 2	0,039	0,233	277,00
Inserted screw nut M12, 1-pole switching	3	630	<b>38634.0180</b>	1	NSL 2	0,039	0,233	277,00



38620.0120

### NH Fuse-Switches, vertical design, size 1-3, 1-pole or 3-pole switching, Series R2000 with sidewise back connection

**Properties:**

- Sidewise back connection

Description	Size	Amps	Order-No.	PU	PG	Sur. Ag	Sur. Cu	Price €/pc.
side connection M12 left or right, 1-pole switching	2	400	<b>38620.0120</b>	1	NSL 2	0,039	0,171	251,00
side connection M12 left or right, 3-pole switching	2	400	<b>38620.0130</b>	1	NSL 2	0,039	0,171	254,00
side connection M12 left or right, 1-pole switching	3	630	<b>38630.0120</b>	1	NSL 2	0,039	0,171	282,00
side connection M12 left or right, 3-pole switching	3	630	<b>38630.0130</b>	1	NSL 2	0,039	0,171	322,00

### NH Fuse-Switches, vertical design, size 1-3, 1-pole or 3-pole switching, Series R2000 with coupling system to connect two busbar systems of 185 mm centre distance.

Description	Size	Amps	Order-No.	PU	PG	Sur. Ag	Sur. Cu	Price €/pc.
NH-Fuse-switch, 3-pole switching as coupling unit, terminal left front of the busbar	3	630	<b>38630.0560</b>	1	NSL 2	0,039	0,275	443,00
NH-Fuse-switch, 3-pole switching as coupling unit, terminal left behind of the busbar	3	630	<b>38630.0590</b>	1	NSL 2	0,039	0,275	443,00
NH-Fuse-switch, 1-pole switching as coupling unit, terminal left front of the busbar	4a	1250	<b>38400.0260</b>	1	NSL 3	0,980	1,134	822,00

## NH Fuse-Switches, vertical design

For more information  
see page **157**



38634.0250

### NH Fuse-Switches, vertical design, 1000 A Incoming switch, Series 2000

Description	Size	Amps	Order-No.	PU	PG	Sur. Ag	Sur. Cu	Price €/pc.
M12, sidewise branch connection, 1-pole switching	3	1000	<b>38630.0140</b>	1	NSL 2	0,039	0,183	324,00
M12, sidewise branch connection, 3-pole switching	3	1000	<b>38630.0150</b>	1	NSL 2	0,039	0,183	327,00
M12, terminal back side, 1-pole switching	3	1000	<b>38630.0530</b>	1	NSL 2	0,039	0,183	324,00
M12, terminal back side, 3-pole switching	3	1000	<b>38630.0540</b>	1	NSL 2	0,039	0,183	324,00
Inserted screw nut M12, top / bottom, 3-pole switching	3	1000	<b>38634.0250</b>	1	NSL 2	0,056	0,310	348,00
Inserted screw nut M12, top / bottom, 1-pole switching	3	1000	<b>38634.0260</b>	1	NSL 2	0,056	0,310	348,00



38300.1235

### NH Fuse-Switch, vertical design, size 3, 1-pole or 3-pole switching, series NTSL for 630 kVA

Description	Size	Amps	Order-No.	PU	PG	Sur. Ag	Sur. Cu	Price €/pc.
Flat terminal M12, 1-pole switching, terminal bottom	3	630kVA	<b>38300.1235</b>	1	NSL 2	0,063	0,317	304,00
Flat terminal M10, 3-pole switching, terminal bottom	3	630kVA	<b>38300.1275</b>	1	NSL 2	0,063	0,366	313,00
Flat terminal M12, 1-pole switching, terminal top	3	630kVA	<b>38350.1235</b>	1	NSL 2	0,072	0,317	304,00
Flat terminal M10, 3-pole switching, terminal top	3	630kVA	<b>38350.1275</b>	1	NSL 2	0,072	0,317	313,00
Special terminal for busbar 60mm, 3-pole switching, terminal top	3	630kVA	<b>38350.1595</b>	1	NSL 2	0,110	0,720	495,00
Flat terminal M12, 1-pole switching, terminal back side	3	630kVA	<b>38374.1465</b>	1	NSL 2	0,090	0,378	282,00
Flat terminal M12, 3-pole switching, terminal back side	3	630kVA	<b>38374.1495</b>	1	NSL 2	0,090	0,378	311,00



38662.0000

### NH Fuse-Switches - vertical design - Size 1/2: 400 A - series EKDEO

Description	Size	Amps	Order-No.	PU	PG	Sur. Ag	Sur. Cu	Price €/pc.
Threaded bolt M12 x 30	1/2	400	<b>38662.0000</b>	1	NSL 2	0,018	0,160	227,00
Inserted screw nut M12	1/2	400	<b>38664.0000</b>	1	NSL 2	0,018	0,160	227,00
V-stamped (Clamps not attached)	1/2	400	<b>38665.0000</b>	1	NSL 2	0,018	0,164	227,00
V2N-stamped (Clamps not attached)	1/2	400	<b>38665.0470</b>	1	NSL 2	0,018	0,164	227,00

## NH Fuse-Switches, vertical design and NH Fuse-Rails

For more information  
see page 157



38200.0025

### NH Fuse-Switches, vertical design, size 1-3, 1-pole or 3-pole switching, Series NTSL

Description	Size	Amps	Order-No.	PU	PG	Sur. Ag	Sur. Cu	Price €/pc.
Flat terminal M10, 1-pole switching, terminal bottom	1	250	<b>38100.0005</b>	1	NSL 2	0,070	0,261	196,00
Flat terminal M10, 3-pole switching, terminal bottom	1	250	<b>38100.0025</b>	1	NSL 2	0,070	0,261	200,00
Flat terminal M10, 1-pole switching, terminal top	1	250	<b>38150.0005</b>	1	NSL 2	0,070	0,261	196,00
Flat terminal M10, 3-pole switching, terminal top	1	250	<b>38150.0025</b>	1	NSL 2	0,070	0,261	200,00
Flat terminal M10, 1-pole switching, terminal bottom	2	400	<b>38200.0005</b>	1	NSL 2	0,070	0,261	204,00
Flat terminal M10, 3-pole switching, terminal bottom	2	400	<b>38200.0025</b>	1	NSL 2	0,070	0,261	207,00
Flat terminal M10, 1-pole switching, terminal top	2	400	<b>38250.0005</b>	1	NSL 2	0,070	0,261	204,00
Flat terminal M10, 3-pole switching, terminal top	2	400	<b>38250.0025</b>	1	NSL 2	0,070	0,261	207,00
Flat terminal M12, 1-pole switching, terminal bottom	2	630	<b>38300.0005</b>	1	NSL 2	0,072	0,317	236,00
Flat terminal M12, 3-pole switching, terminal bottom	3	630	<b>38300.0025</b>	1	NSL 2	0,072	0,317	240,00
Flat terminal M12, 1-pole switching, terminal top	3	630	<b>38350.0005</b>	1	NSL 2	0,072	0,317	236,00
Flat terminal M10, 3-pole switching, terminal top	3	630	<b>38350.0025</b>	1	NSL 2	0,072	0,317	240,00



38550.0020

### NH Fuse-Rails, size 00-3, with contact and terminal cover

Description	Type	Amps	Order-No.	PU	PG	Sur. Ag	Sur. Cu	Price €/pc.
With terminal and contact cover, Multiple use terminal (screw M8)	00	160	<b>38550.0020</b>	10	42	0,005	0,017	44,00
With terminal and contact cover, Multiple use terminal (screw M8)	00	160	<b>38570.0020</b>	3	NSL 3	0,012	0,071	76,00
With terminal and contact cover, V2N-stamped (clamps not attached)	00	160	<b>38575.0600</b>	2	NL 4	0,012	0,105	113,00
Inserted screw nut M12	½	400	<b>38864.0020</b>	1	NL 4	0,018	0,151	125,00
V2N-stamped (Clamps not attached)	½	400	<b>38865.0020</b>	1	NL 4	0,018	0,151	125,00
Inserted screw nut M12	3		<b>38954.0140</b>					
V2N-stamped (Clamps not attached)	3	630	<b>38955.0020</b>	1	NL 4	0,039	0,263	151,00

### Mounting packet

Description	Size	Amps	Order-No.	PU	PG	Sur. Ag	Sur. Cu	Price €/pc.
Packet connection material for NH Fuse-Switches, vertical design, size 00IN	00IN		<b>36239.0020</b>	1	netto			on demand
Content: - 1 Set pressure plates with prism 1,5 - 95 mm <sup>2</sup> - 3 screws M05 x 30 DIN 302/8,8 - 3 nuts M05 DIN 127								
Packet NH Fuse-Switch, vertical design, 3-pole switching, size 00, series 00N with single adapter for 185 mm busbar systems	00	160	<b>38500.0260</b>	1	netto	0,010	0,075	on demand
Content: - 1 NH Fuse-Switch, vertical design, 3-pole switching, size 00, series N, with flat terminal - 38500.0000 - 1 Single adapter 100/185 - 36035.0020 - 1 Set Adjusting frame for top and bottom - 36034.0020								
Packet NH Fuse-Switch, vertical design, 3-pole switching, size 00, series 00N with single adapter for 185 mm busbar systems	00	160	<b>38502.0260</b>	1	netto	0,010	0,075	on demand
Content: - 1 NH Fuse-Switch, vertical design, 3-pole switching, size 00, series N, with pressure plates and prism 2,5-70 mm <sup>2</sup> - 38502.0000 - 1 Single adapter 100/185 - 36035.0020 - 1 Set Adjusting frame for top and bottom - 36034.0020								
Packet NH Fuse-Switch, vertical design, 3-pole switching, size 00, series 00IN with single adapter for 185 mm busbar systems	00	160	<b>38544.0260</b>	1	netto	0,013	0,091	on demand
Content: - 1 NH Fuse-Switch, vertical design, 3-pole switching, size 00, series IN, multiple use terminal U5 (screws M8) - 38544.0000 - 1 Single adapter 100/185 - 36035.0020 - 1 Set Adjusting frame for top and bottom - 36237.0010								

## NH Fuse-Switches, vertical design and NH Fuse-Rails

### Mounting packet

Description	Size	Amps	Order-No.	PU	PG	Sur. Ag	Sur. Cu	Price €/pc.
Packet NH Fuse-Rail, vertical design, size 00, series 00N with single adapter for 185 mm busbar systems Content: - 1 NH Fuse-Rail, vertical design, size 00, series N, with flat terminal - 38550.0000 - 1 Single adapter 100/185 - 36035.0020	00	160	<b>38550.0260</b>	1	netto	0,010	0,075	on demand
Packet NH Fuse-Rail, vertical design, size 00, series 00N with single adapter for 185 mm busbar systems Content: - 1 NH Fuse-Rail, vertical design, size 00, series N, flat terminal, with contact- and terminal cover - 38552.0020 - 1 Single adapter 100/185 - 36035.0020	00	160	<b>38552.0260</b>	1	netto	0,010	0,075	on demand
Packet NH Fuse-Switch, vertical design, 1-pole switching, size 1, series 2000, with v-clamps Content: - 1 NH Fuse-Switch, vertical design, 1-pole switching, size 1, series 2000, V-stamped - 38615.0000 - 3 V-clamps 240 mm <sup>2</sup> sm -	1	250	<b>38615.0610</b>	1	netto	0,039	0,234	on demand
Packet NH Fuse-Switch, vertical design, 3-pole switching, size 1, series 2000, with v-clamps Content: - 1 NH Fuse-Switch, vertical design, 3-pole switching, size 1, series 2000, V-stamped - 38615.0020 - 3 V-clamps 240 mm <sup>2</sup> sm	1	250	<b>38615.0990</b>	1	netto	0,039	0,234	on demand
Packet NH Fuse-Switch, vertical design, 3-pole switching, size 2, series 2000, with v-clamps Content: - 1 NH Fuse-Switch, vertical design, 1-pole switching, size 2, series 2000, V-stamped - 38625.00980 - 1 Set V-clamps 2 x 50-185 sm with lug - 36025.0050	2	400	<b>38625.0310</b>	1	netto	0,039	0,234	on demand
Packet NH Fuse-Switch, vertical design, 1-pole switching, size 2, series 2000, with v-clamps Content: - 1 NH Fuse-Switch, vertical design, 1-pole switching, size 2, series 2000, V-stamped - 38625.0000 - 3 V-clamps 240 mm <sup>2</sup> sm	2	400	<b>38625.0610</b>	1	netto	0,039	0,234	on demand
Packet NH Fuse-Switch, vertical design, 3-pole switching, size 2, series 2000, with v-clamps Content: - 1 NH Fuse-Switch, vertical design, 3-pole switching, size 2, series 2000, V-stamped - 38625.0020 - 3 V-clamps 240 mm <sup>2</sup> sm	2	400	<b>38625.0990</b>	1	netto	0,039	0,234	on demand
Packet NH Fuse-Switch, vertical design, 1-pole switching, size 1/2 series EKDEO, with v-clamps Content: - 1 NH Fuse-Switch, vertical design, 1-pole switching, size 1/2, series EKDEO, V-stamped - 38665.0000 - 3 V-clamps 240 mm <sup>2</sup> sm	½	400	<b>38665.1180</b>	1	netto	0,018	0,164	on demand
Packet NH Fuse-Rail, vertical design, size 1/2, series EDURO, with v-clamps Content: - 1 NH Fuse-Rail, vertical design, size 1/2 series EDURO, V2-stamped - 38865.0000 - 3 V-clamps 240 mm <sup>2</sup> sm	½	400	<b>38865.1120</b>	1	netto	0,018	0,151	on demand
Packet NH Fuse-Switch, vertical design, 3-pole switching, size 3, series 2000, for paralell operation Content: - 2 NH Fuse-Switch, vertical design, 3-pole switching, size 3, series 2000, with inserted srew nut M12 - 38634.0020 - 1 Connecting frame for paralell operation of 2 NH Fuse-Switches - 45071.0100 - 1 Terminal for paralell switch - 1 Terminal cover for paralell switch	3	1250	<b>38634.1170</b>	1	netto	0,039	0,548	on demand
Packet NH Fuse-Switch, vertical design, 3-pole switching, size 2, series 2000, with v-clamps Content: - 1 NH Fuse-Switch, vertical design, 3-pole switching, size 3, series 2000, V-stamped - 38635.00980 - 1 Set V-clamps 2 x 50-185 sm with lug - 36025.0050	3	630	<b>38635.0310</b>	1	netto	0,039	0,264	on demand
Packet NH Fuse-Switch, vertical design, 1-pole switching, size 2, series 2000, with v-clamps Content: - 1 NH Fuse-Switch, vertical design, 1-pole switching, size 2, series 2000, V-stamped - 38625.0000 - 3 V-clamps 240 mm <sup>2</sup> sm	3	630	<b>38635.0610</b>	1	netto	0,039	0,260	on demand
Packet NH Fuse-Switch, vertical design, 3-pole switching, size 3, series 2000, with v-clamps Content: - 1 NH Fuse-Switch, vertical design, 3-pole switching, size 3, series 2000, V-stamped - 38635.0020 - 3 V-clamps 240 mm <sup>2</sup> sm	3	630	<b>38635.0990</b>	1	netto	0,039	0,260	on demand
Packet NH Fuse-Rail, vertical design, size 3, with v-clamps Content: - 1 NH Fuse-Rail, vertical design, size 3 V2N-stamped - 38955.0020 - 3 V2MD-clamps 240 mm <sup>2</sup> sm/rm	3	630	<b>38955.0500</b>	1	netto	0,039	0,268	on demand



## NH Fuse-Switches, vertical design and NH Fuse-Rails

 For more information  
 see page 157


31104.0100

### Accessories for NH Fuse-Switches, vertical design and Fuse-Rails

Description	Type	Order-No.	PU	PG	Sur. Ag	Sur. Cu	Price €/pc.
Terminal cover	00N - 00/185	<b>31104.0100</b>	1	NSL 5			1,05
Carrier for identification label	00N	<b>31122.0100</b>	1	NSL 5			1,40
Twinning set for parallel operation	00N	<b>31187.0100</b>	1	NSL 5			7,50
Terminal cover 140 mm for V-clamps	1-2-3 R2000, NTSL	<b>31319.0100</b>	1	NSL 5			9,30
Insulating cap V2N	1-2-3 R2000, NTSL	<b>31516.0100</b>	1	netto			1,15
Protection vs. power theft	00IN	<b>31559.0100</b>	1	NSL 00IN			0,70
Carrier for identification label for clip-mounting onto housing of the Fuse-Switch	00IN	<b>31568.0100</b>	1	NSL 00IN			1,25
Contact cover for NH Fuse-Rails	1-2	<b>31605.0100</b>	1				
Insulating cap V2 MD		<b>31607.0100</b>	1	0			1,10
Extension terminal cover for EKDEO	EKDEO	<b>31946.0100</b>	1	netto		on dem.	
PEN connection with lug 2 x 50-185 mm <sup>2</sup> sm		<b>36025.0050</b>	1	NZ 4			41,00
35 - 185 mm <sup>2</sup> sm, 70 - 240 mm <sup>2</sup> se		<b>36025.0060</b>	1	NZ 4			11,50
Adjusting frame for the length ( 1 Set = 2 pcs.) by mounting size 00 with size 1-3	00N	<b>36034.0020</b>	1	NSL 5			3,20
Twin adapter 185/185	00N / 00IN	<b>36035.0010</b>		NSL 5			29,00
Mono adapter for the 185 mm busbar system	00N	<b>36035.0020</b>	1	NSL 5		0,020	15,00
Mono adapter 100/185 SB	00IN	<b>36035.0050</b>		NSL 2			17,00
Contact hooks for mounting without drilling (1 Set = 3 pcs.)	00	<b>36036.0010</b>	1	NSL 5			3,30
Mono-adapter for 60 mm busbar centre distance	00N	<b>36039.0010</b>	1	NSL 5		0,015	14,00
Nameplate 45 x 17 mm	1-2-3 R2000	<b>36040.0010</b>	1	NSL 5			2,30
Mounting hooks (1 Set = 2 pcs.)	00 1-2-3	<b>36048.0010</b>	1	NSL 5			1,10
Claw clamp M12 for 50 - 150 mm <sup>2</sup> se (1 Set = 3 pcs.)	1-2-3 R2000, NTSL	<b>36063.0010</b>	1	NZ 4			16,00
Blank panel cover 100 mm width	1-2-3 R2000, NTSL	<b>36102.0020</b>	1	NSL 5			18,00
Side frame	1-2-3 R2000, NTSL	<b>36104.0010</b>	1	NSL 5			14,00
Twin-adapter 185/185		<b>36105.0010</b>	1				31,00
Twin-adapter for 185 mm busbar centre distance with side protection	00N / 00IN	<b>36105.0020</b>	1	NSL 5		0,080	36,00
Terminal cover for parallel switching	1-2-3 R2000	<b>36106.0030</b>	1	NSL 5			27,00
Micro switch for position indicating	1-2-3 R2000	<b>36107.0010</b>	1	NSL 5			5,00
Distance bolts for height adjusting (1 Set = 3 pcs.)	1-2-3 R2000	<b>36110.0010</b>	1	NSL 5			22,00
Blank panel cover 50/185 for twin adapter	00N , 00IN, 00/185	<b>36119.0010</b>	1	NSL 5			14,00
V2N-clamp 35 - 240 mm <sup>2</sup> sm / 35 - 300 mm <sup>2</sup> se (1 Set = 3 pcs.)	00 - 1 - 2 - 3	<b>36148.0010</b>	1	NZ 4			15,00
Micro switch for position indicating, series EKDEO	EKDEO	<b>36252.0010</b>	1	NSL 5			3,15
V2MD-clamp 25-300 mm <sup>2</sup>	1-2-3	<b>36298.0010</b>	1	NZ 4			15,00
Cover for NH-Lei 00/185	00/185	<b>36130.0010</b>	1	NSL 5			19,00
Carrier for identification label, series EDURO	EDURO	<b>36301.0010</b>	1	netto		on dem.	
Cover for EDURO	EDURO	<b>36322.0010</b>	1	NSL 2			24,00
Contact hooks for EDURO (1 Set = 3 pcs.)	EDURO	<b>36931.0010</b>	1	NZ 3			17,00

## NH Fuse-Switches, vertical design and NH Fuse-Rails

### Accessories for NH-Fuse-Switches, vertical design

Description	Type	Order-No.	PU	PG	Sur. Ag	Sur. Cu	Price €/pc.
Blank panel cover 50/100 für twin adapter	00N / 00IN	36119.0020	1	NSL 5			14,00
MP-Connecting lug	00N 00/185	36125.0010	1	netto			14,00
Nameplate 70 x 45 mm	1-2-3 R2000	36133.0010	1	NSL 5			4,20
PEN connection with lug, V2N-clamp 35 - 240mm <sup>2</sup> sm/ 35 - 300mm <sup>2</sup> se		36138.0010	1	NZ 4	0,002	0,008	7,30
Terminal connecting set for 2 x M8	00/185	36226.0010	1	NSL 2	0,005	0,021	16,00
Identification label for clip-mounting on carrier or terminal cover	00IN	36233.0010	1	NSL 00IN			2,10
Identification label (with threads) for mounting onto adjusting frames	00IN	36234.0010	1	NSL 00IN			3,10
Twin adapter for the 185 mm busbar system	00IN	36235.0010	1	NSL 00IN		0,079	23,00
Side frame	00IN	36236.0010	1	NSL 00IN			4,25
Adjusting frames (1 set = 2 pcs.) to adjust longitudinal difference between NH Fuse-Switches Size 00 and size 1 - 3	00IN	36237.0010	1	NSL 00IN			4,25
Pressure plates (1 set = 3 pcs.) for direct connection of cables 1,5 - 25 mm <sup>2</sup> or flat cable < 16 x 10 mm	00IN	36238.0010	1	NSL 00IN			4,25
Pressure plates with contact prism (1 set = 3 pcs.) for direct connection of cables 1,5 - 95 mm <sup>2</sup>	00IN	36239.0010	1	NSL 00IN			7,25
Contact hooks for mounting without drilling (1set = 3 pcs.)	00IN	36240.0010	1	NSL 00IN			3,10
Terminal for parallel switching	1-2-3 R2000	36245.0010	1	netto	0,028	0,290	95,00
Electronic fuse monitoring	00IN/00N	36716.0010	1	NSL 5	0,028	0,290	179,00
Frame for 00N/100	00N	40464.0100	1	NSL 5			4,15
Side frame 00N	00N	40465.0100	1	NSL 5			3,20
Pressure plate 1,5 - 25 mm <sup>2</sup> (1 Set = 3 pcs.)	00/185	83495.0100	1	NSL 5			3,25
Pressure plate with contact prism 2,5 - 70 mm <sup>2</sup> (1 Set = 3 pcs.)	00/185	83496.0100	1	NSL 5			8,30
Micro switch	00/185	85138.0100	1	NT IN 1			6,00
V-clamp 35 - 70 sm	00/185	85246.0100	1	netto			3,25

## NH Fuse-Switches, vertical design and NH Fuse-Rails

## Technical data

### Technical data for NH Fuse-Switches, vertical design acc. to VDE 0660 / 107 - IEC/EN 60 947-3

For NH Fuse-Links acc. to 0636 T201 <sup>1)</sup>	Size	00	1	2	3	3 1000A <sup>3)</sup>	4a
<b>Rated operational current I<sub>n</sub></b>	A	160	250	400	630	1000	1250/ 1600 <sup>2)</sup>
<b>Conventional free air thermal current I<sub>th</sub></b>	A	160	250	400	630	1000	1250/ 1600 <sup>2)</sup>
<b>Rated operational voltage U<sub>e</sub></b>	V	690	690	690	690	690	690
<b>Rated insulation voltage U<sub>i</sub></b>	V	800	800	800	800	800	800
<b>Rated impuls withstand voltage</b>	kV	8	8	8	8	8	8
<b>Rated conditional short circuit current (when protected by Fuse-Links)</b>	kA	50	50	50	50	-	50
<b>Utilization category IEC 60 947-3</b>	U <sub>e</sub> = 400V U <sub>e</sub> = 690V U <sub>e</sub> = 440V	AC-22B AC-21B DC-21B	AC-22B AC-21B <sup>4)</sup>	AC-22B AC-21B <sup>4)</sup>	AC-22B AC-21B <sup>4)</sup>	AC-20B AC-20B DC-20B	AC-22B AC-21B DC-21B
<b>Mechanical durability</b>	cycles	1600	1600	1000	1000	1000	600
<b>Permissible ambient air temperature</b>			-25 up to +55 C°				
<b>Type of protection DIN/EN 60 529/VDE 0470 T1</b>	-	IP 2 x					

**Notice:** <sup>1)</sup> When using gR-Fuse-Links (VDE 0636/40), please ask for information.

<sup>2)</sup> 1600 A possible with Fuse-Links up to a rated power dissipation of 140 W.

<sup>3)</sup> Isolator unit with solid copper-links only (on demand).

<sup>4)</sup> "DC-Category on demand!"

**Series 2000**

**NH Fuse-Switches, vertical design Size 00/100 3-pole switching** with a total width of only 50 mm are compact and can be combined ideally with the 100 mm width NH Fuse-Switches sizes 1-3. The clear build-in depth is 190 mm (specification of cable distribution cabinets).

The are fully protected against direct contact with live parts in any switch position, acc. to BGV A3. Due to the double breaking per pahse (6 arc quenching chambers) the high breaking capacity is achieved. Terminal top or botto is optional without modification.

The variety of useful accessories of the NH Fuse-Switches size 00/100 offer an all-round application. For example contacting on bus-bars of 60 mm, 100 mm and 185 mm busbar centre distances is possible.

**NH Fuse-Switches, vertical design, size 00: 125/160 A, 3-pole switching, for busbars with 100 mm centre distance**

Description/Terminal	Size	Amps I <sub>n</sub>	Order no.	Description	Pack	Weight in kg
Screw terminal M8	00N	160 <sup>1)</sup>	38500.0000	NH-La-Lei 00N G4	2	1,19
Pressure plate for 1,5 - 50mm <sup>2</sup>	00N	125 <sup>2)</sup>	38501.0000	NH-La-Lei 00N U3	2	1,17
Pressure plate with contact prism für 2,5-70mm <sup>2</sup>	00N	160 <sup>3)</sup>	38502.0000	NH-La-Lei 00N U4	2	1,21

**Other types on demand.**

- 1) Cable terminal 50 n (125 A). Flat terminal 20 mm width (160 A).
- 2) Conductor cross section 1,5–25 mm<sup>2</sup>
- 3) Conductor cross section 2,5–70 mm<sup>2</sup>



**Screw terminal**  
38500.0000



**Pressure plate**  
38501.0000



**Pressure plate with contact prism**  
38502.0000

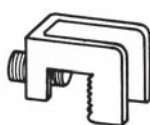
**Accessories of NH Fuse-Switches, vertical design, size 00: 125/160 A, 3-pole switching, for busbars with 100 mm centre distance**

Description	Terminal	Order no.	Description	Pack	Weight in kg
Carrier for identification label	00N	31122.0100	INFOTRÄGER NH-LA-LEI 00N	1	0,01
Contact hooks (for mounting without drilling) (1 set = 3 pcs.)	00N, 00/185	36036.0010	1 SATZ KONTAKTHAKEN	1	0,08
Frame 00N/100	00N	40464.0100	BLENDRAHMEN GR.00N/100	1	0,10
Side frame 00N	00N	40465.0100	BLENDSTREIFEN GR.00N	1	0,10
Adjusting frame for the lengh (1 Set = 2 pcs.) by mounting size 00 with size 1-3	00N	36034.0020	1 SATZ AUSGLEICHSBLENDE	1	0,06
Nameplate (with thread) 45 x 17 mm	00-3	36040.0010	BEZEICHNUNGSSCHILD SCHRAUBBAR	1	0,01
MP-Connecting lug	00N 00/185	36125.0010	MP-DOPPELANSCHLUSSSCHIENE	1	0,10
Blank panel cover 50/100 for twin adapter	00N	36119.0020	LEERFELDABDECKUNG 50/100	1	0,10
Connecting frame for twin version	00N	31187.0100	VERBINDUNGSBLEND LA-LEI 00N	1	0,05

**Carrier for identification label**  
31122.0100



**Contact hooks (for mounting without drilling)**  
36036.0010



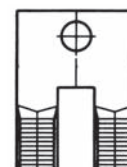
**Adjusting frame**  
36034.0020



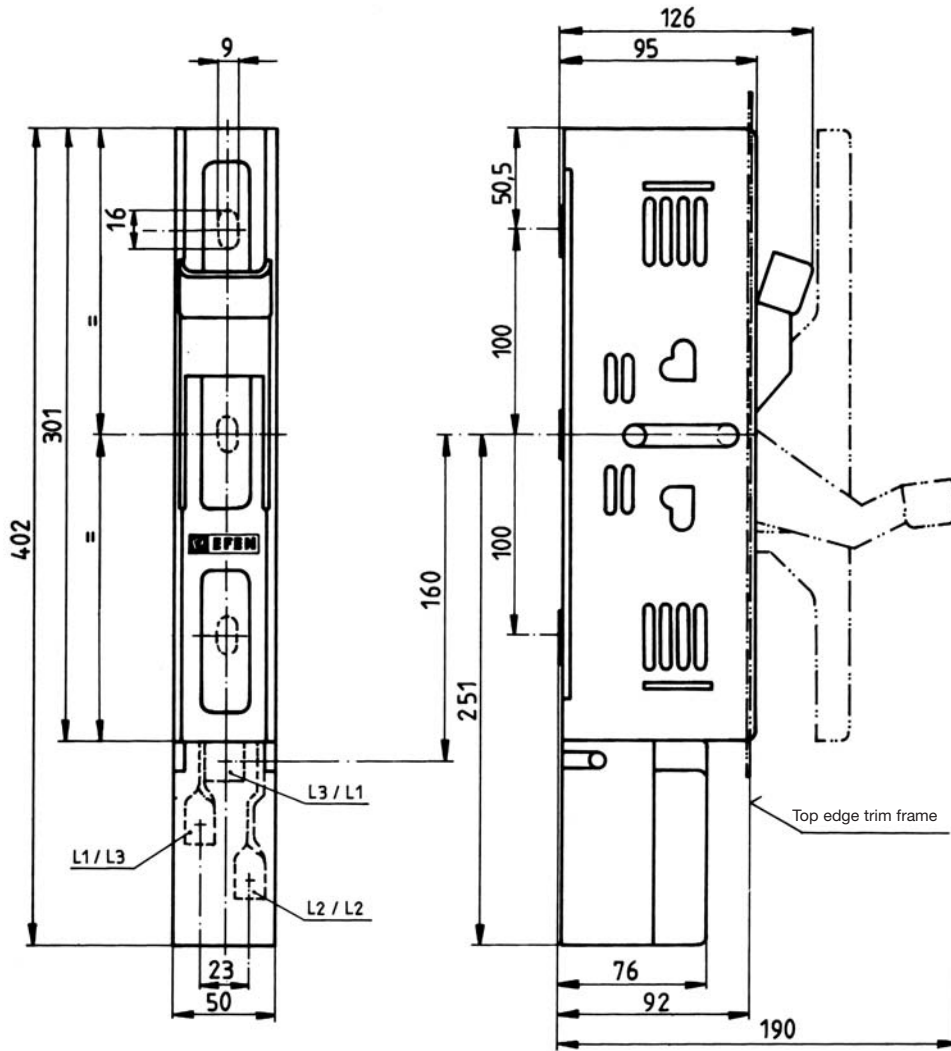
**Nameplate (with thread)**  
36040.0010



**MP-Connecting lug**  
36125.0010



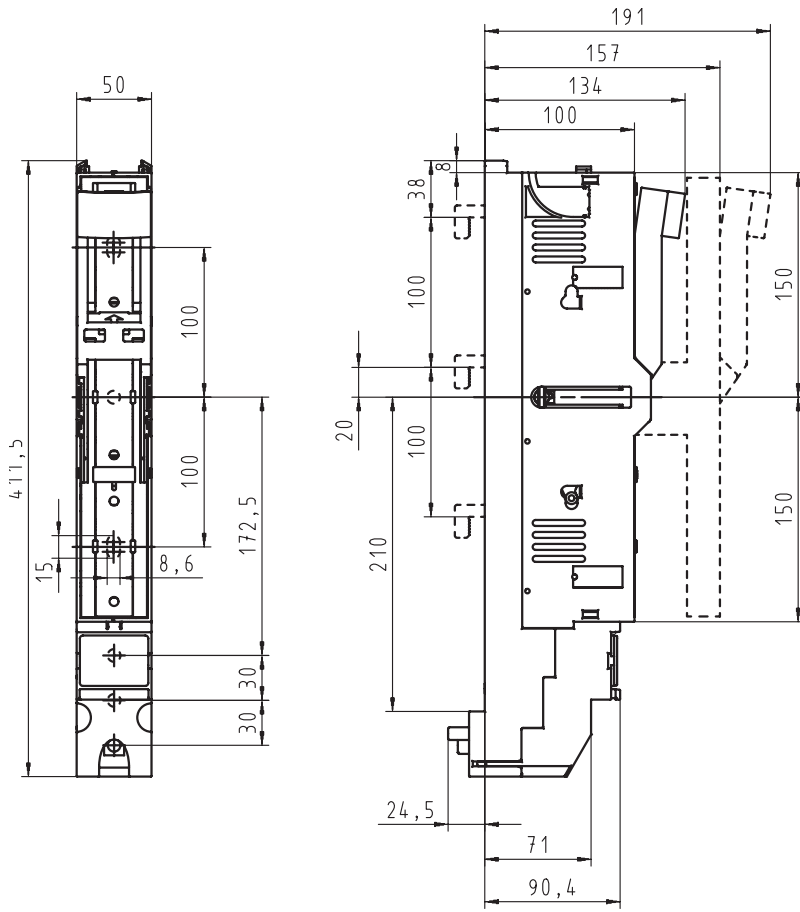
NH Fuse-Switch, vertical design, size 00/100: 125/160 A



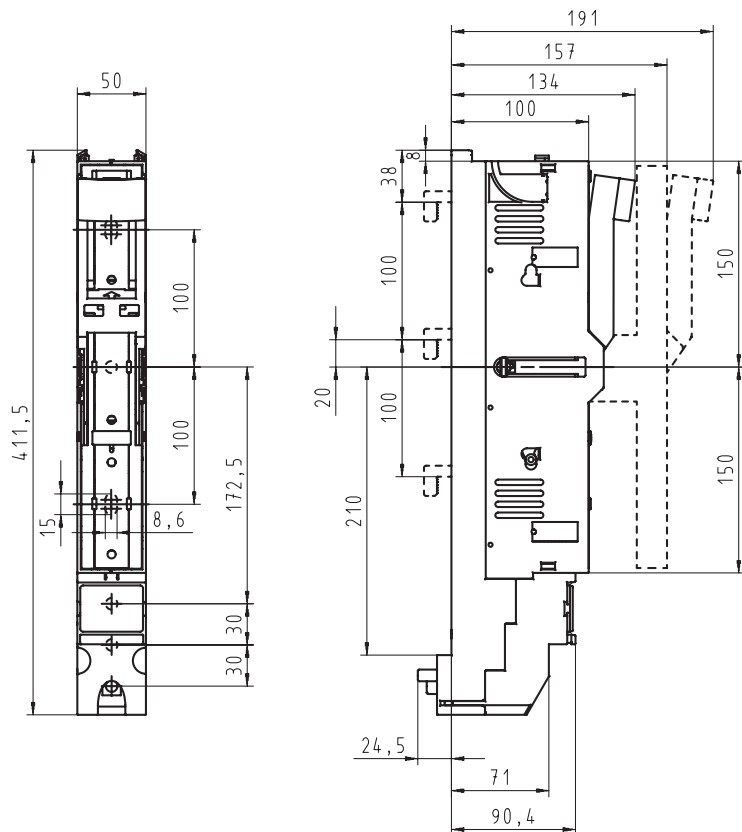
NH Fuse-Switches, vertical design, size 00IN, 3-pole switching

Description	Size	Amps I <sub>n</sub>	Order no.	Description	Pack	Weight in kg
Multiple use terminal (screw M8) Directmounting on 60 mm busbar systems with hooks, terminal top	00	160	38534.5000	NH-LA-LEI 00IN 3P O 60 U5	2	1,265
Multiple use terminal (screw M8) Directmounting on 60 mm busbar systems with hooks, terminal bottom	00	160	38534.1000	NH-LA-LEI 00IN 3P U 60 U5	2	1,27
Multiple use terminal (screw M8), direct mounting on 100 mm busbar systems, cable terminal top/bottom selection possible	00	160	38544.0000	NH-LA-LEI 00IN 3P U5	2	1,155

Size 00, Order no.: 38544.0000



Size 00, Order no.: 38534.1000



NSL/NL

**NH Fuse-Switches size 00/185, single pole switchable**

are in their vertical width of 50 mm ideal comparable with the 100 mm NH Fuse-Switch size 1-3. The standard conditional shock protection according to BGV A3 is met in either way, switch-on or switch-off position. Through the special spacious cable service area

and the possibility to disconnect each phase separately, these fuses are exquisitely operational for fitting into the cable terminal boxes, or into the low-voltage distribution net of the energy supply system.

**NH Fuse-Switches, vertical design, size 00: 160 A, 1-pole switching, for busbars with 185 mm centre distance**

Description	Size	Amps I <sub>n</sub>	Order no.	Description	Pack	Weight in kg
Multiple use terminal (screw M8)	00/185	160	38520.0000	NH-La-Lei 00/185 1P U5	2	2,22
V2N-terminal includes the V-clamp 35-240sm/35-300 se	00/185	160	38525.0600	NH-La-Lei 00/185 1P VK V2N	2	2,79

**Terminal**



**Multiple use terminal (screw M8)**  
38520.0000

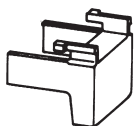


**V2N-terminal**  
38525.0600

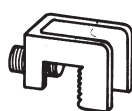
**Accessories for NH Fuse-Switches, vertical design, size 00: 160 A, 1-pole switching, for busbars with 185 mm centre distance**

Description	Size	Order no.	Description	Pack	Weight in kg
Carrier for identification label	00	31122.0100	INFOTRÄGER NH-LA-LEI 00N	1	0,01
Contact hooks (for mounting without drilling) / (1 set = 3 pcs.)	00N, 00/185	36036.0010	1 SATZ KONTAKTHAKEN	1	0,08
Nameplate (with thread) 45 x 17 mm	00-3	36040.0010	BEZEICHNUNGSSCHILD SCHRAUBBAR	1	0,01
Mounting hooks (1 set = 2 pcs.)		36048.0010	MONTAGEHAKEN 1 SATZ		
Pressure plate 1,5-25 mm <sup>2</sup> (1 set = 3 pcs.)	00/185	83495.0100	DRUCKSTÜCKE GR.00/185 1 SATZ	1	0,10
Pressure plate with contact prism 2,5 - 70 mm <sup>2</sup> (1 set = 3 pcs.)	00/185	83496.0100	KONTAKTPRISMEN GR.00/185 1 SATZ	1	0,10
Microswitch	00/185	85138.0100	MIKROSCHALTER TYP 1	1	0,00
PEN connecting lug	00N 00/185	36125.0010	MP-DOPPELANSCHLUSSSCHIENE	1	0,10
V-clamp 35 - 70 sm	00/185	85246.0100	KLEMME 35-70 SM	1	0,04
Terminal connection set for 2 x M8	00/185	36226.0010	T-STÜCK 00/185	1	0,25
Blank panel cover 50/185 for twin adapter	00/185	36119.0010	LEERFELDDABDECKUNG 50/185	1	0,10

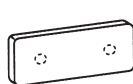
**Carrier for identification label**  
31122.0100



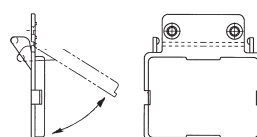
**Contact hooks**  
36036.0010



**Nameplate**  
36040.0010



**Carrier for identification label**  
36246.0010



**Mounting hooks**  
36048.0010



**Pressure plate 1,5-25 mm<sup>2</sup>**  
83495.0100



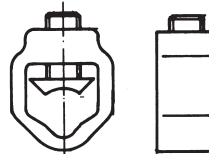
**Pressure plate with contact prism 2,5 - 70 mm<sup>2</sup> re/rm/se/sm**  
83496.0100



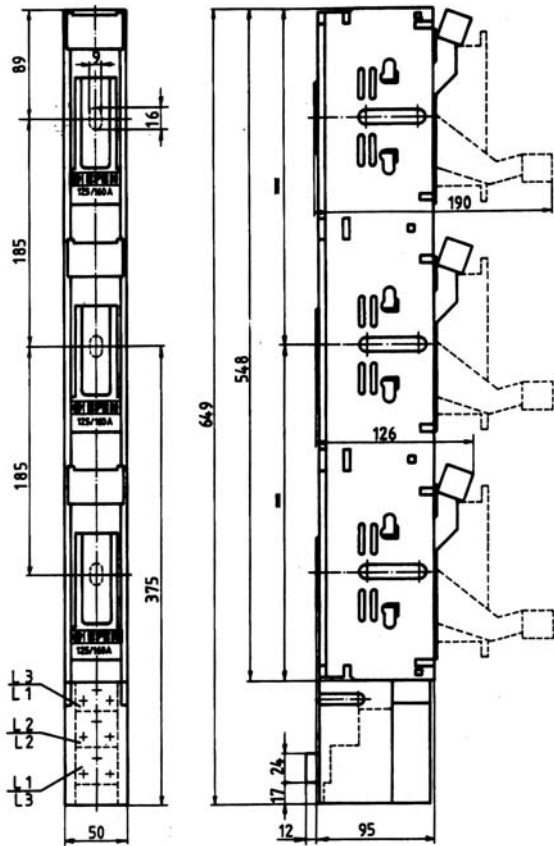
**PEN connecting lug**  
36125.0010



**V-clamp 35 - 70 sm mm<sup>2</sup> sm for Terminal connection set**  
36125.0010



NH Fuse-Switch, vertical design, size 00/185: 160 A





**Busbar adapter**

**for NH Fuse-Rails / NH Fuse-Switches, size 00/100**

NH Fuse-rails size 00/100 and NH Fuse-Switches, vertical design, size 00/100 are basically designed for busbars with a 100 mm busbar centre distance. They can be either fixed with screws or without drilling by means of contacting hooks.

By use of special adapters, these units are also suitable for busbars

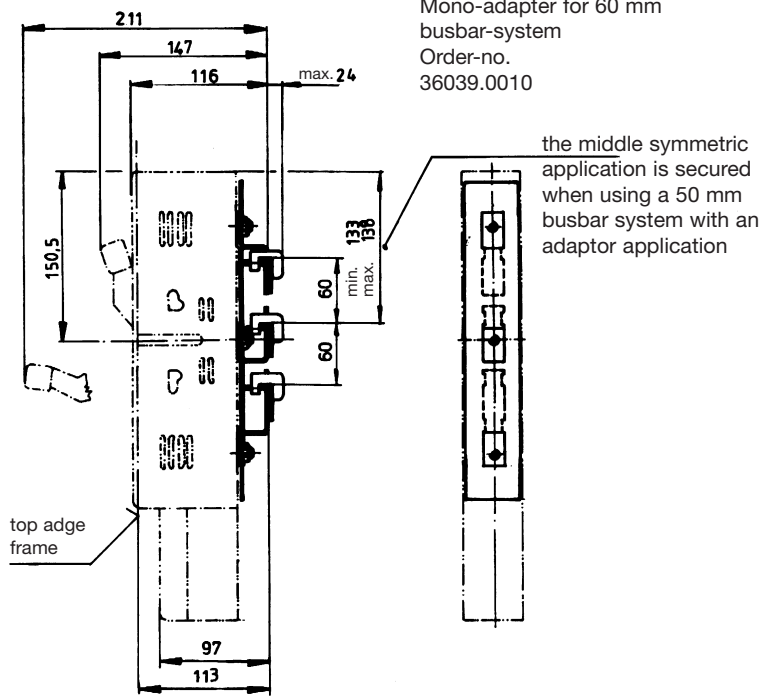
with centre distances of 60 mm or 185 mm.

Thus the normal standard range of busbar systems of NH Fuse-Bases, 3-pole, vertical design, size 00/100 mounted on busbars is covered. The adapter for 185 mm busbar distance adjusts the height difference to NH Fuse-Switches, vertical design, sizes 1 – 2 – 3, the additionally available adjusting frames level the length difference.

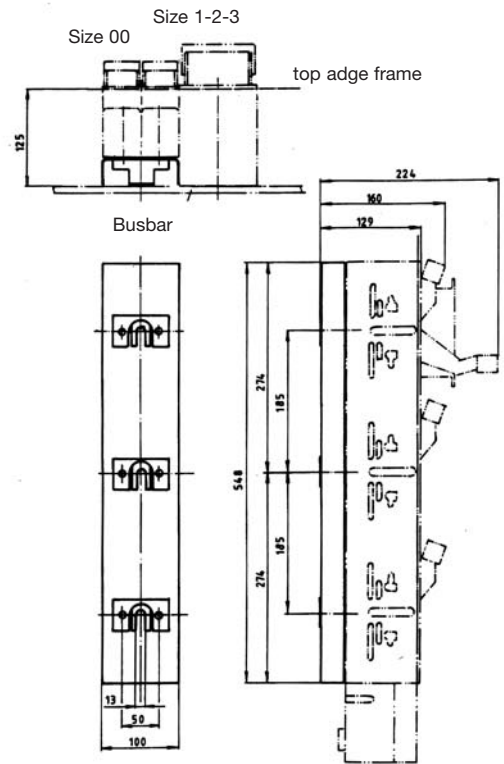
**Busbar adapter size 00/100 and 00/185**

Description	Size	Order no.	Description	Pack	Weight in kg
Mono-adapter for 60 mm busbar centre distance	00N	36039.0010	EINFACHADAPTER 100/60	1	0,28
Twin-adapter for 185 mm busbar centre distance with side protection	00N, 00IN	36105.0020	DOPPELADAPTER 100/185 BG	1	1,00
Mono adapter for the 185 mm busbar system	00N, 00IN	36035.0020	EINFACHADAPTER 100/185	1	0,47
Twin-adapter 185/185	00 / 185	36105.0010	DOPPELADAPTER 185/185	1	0,10
Twin adapter 100/185	00N / 00IN	36035.0010	DOPPELADAPTER 100/185	1	0,29

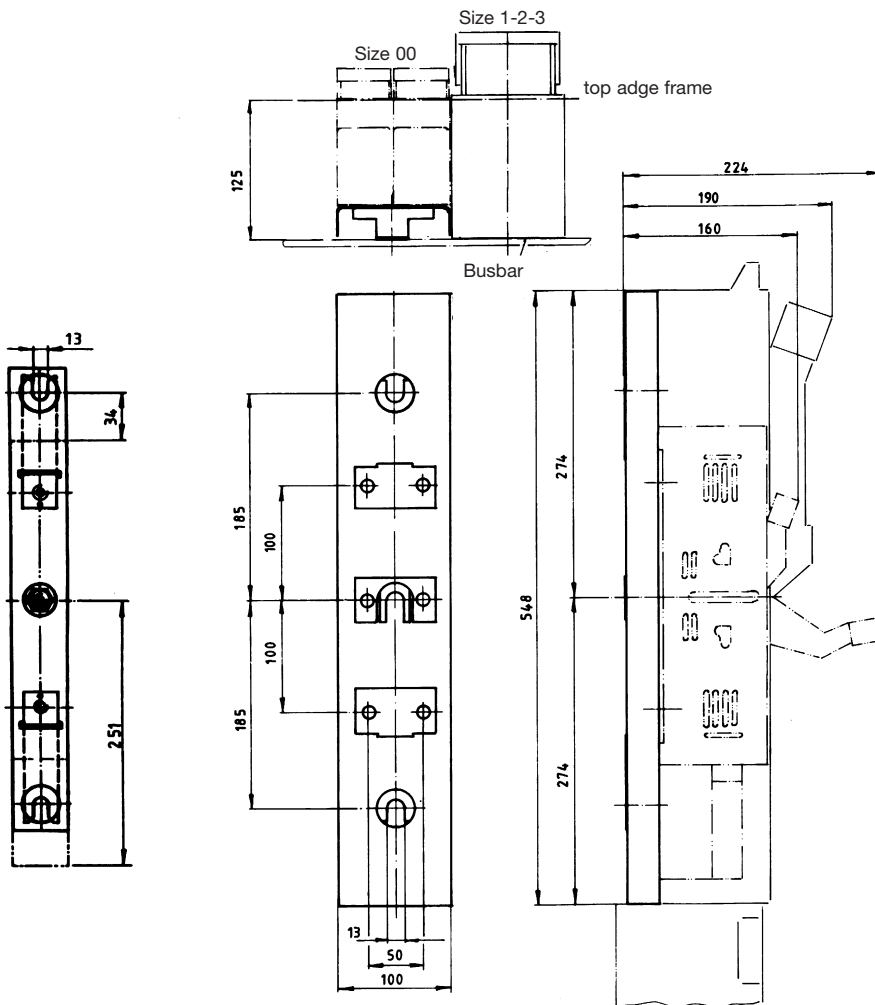
Busbar adapter 100/60 mm



Busbar adapter 185/185 mm



Busbar adapter 100/185 mm



NSL/NL

#### NH Fuse-Switches size 1-3 series 2000

are usable for busbar systems 185 mm and have in all other model types the same vertical dimensions of 100 mm. This makes it possible to obtain a uniform layout in the switchboard. With the parallel guidance of the NH Fuse-Links a double speed is achieved and the high breaking capacity can be reached. After activating the vario-key to turn-off position the product can be put into a secure pad lock position. This is most convenient through the new spacious free floating mechanism. In either on- or off position, the switch control can be secured through key locks against an unauthorized turn-on.

The NH Fuse-Switches vertical design size 1-3 series 2000 offer a variable selection of cable terminal on either top or bottom. A protection against direct contact according to BGV A3 is given in all operating positions. Assembly hooks make it possible to place fuse switch on upper busbar were assembling under current is easier and safer. All insulating material is self extinguishing, halogen free and extremely heat resistant.

#### NH Fuse-Switches size 1N: 250 A

Description/Terminal	Size	Amps I <sub>n</sub>	Type	Order no.	Description	Pack	Weight in kg
Inserted screw nut M12	1	250	single pole switching	38614.0000	NH-La-Lei 1N 1P S6	1	5,92
Inserted screw nut M12	1	250	three pole switching	38614.0020	NH-La-Lei 1N 3P S6	1	5,76
Threaded bolt M12 x 30	1	250	single pole switching	38612.0000	NH-La-Lei 1N 1P B6	1	4,50
Threaded bolt M12 x 30	1	250	three pole switching	38612.0020	NH-La-Lei 1N 3P B6	1	5,81
V-stamped <sup>1)</sup>	1	250	single pole switching	38615.0000	NH-La-Lei 1N 1P V2	1	5,75
V-stamped <sup>1)</sup>	1	250	three pole switching	38615.0020	NH-La-Lei 1N 3P V2	1	5,58

#### NH Fuse-Switches size 2N: 400 A

Description/Terminal	Size	Amps I <sub>n</sub>	Type	Order no.	Description	Pack	Weight in kg
Inserted screw nut M12	2	400	single pole switching	38624.0000	NH-La-Lei 2N 1P S6	1	5,89
Inserted screw nut M12	2	400	three pole switching	38624.0020	NH-La-Lei 2N 3P S6	1	5,75
Threaded bolt M12 x 30	2	400	single pole switching	38622.0000	NH-La-Lei 2N 1P B6	1	5,92
Threaded bolt M12 x 30	2	400	three pole switching	38622.0020	NH-La-Lei 2N 3P B6	1	5,83
V-stamped <sup>1)</sup>	2	400	single pole switching	38625.0000	NH-La-Lei 2N 1P V2	1	5,68
V-stamped <sup>1)</sup>	2	400	three pole switching	38625.0020	NH-La-Lei 2N 3P V2	1	5,54

#### NH Fuse-Switches size 3N: 630 A

Description/Terminal	Size	Amps I <sub>n</sub>	Type	Order no.	Description	Pack	Weight in kg
Inserted screw nut M12	3	630	single pole switching	38634.0000	NH-La-Lei 3N 1P S6	1	6,14
Inserted screw nut M12	3	630	three pole switching	38634.0020	NH-La-Lei 3N 3P S6	1	5,97
Threaded bolt M12 x 30	3	630	single pole switching	38632.0000	NH-La-Lei 3N 1P B6	1	6,18
Threaded bolt M12 x 30	3	630	three pole switching	38632.0020	NH-La-Lei 3N 3P B6	1	5,99
V-stamped <sup>1)</sup>	3	630	single pole switching	38635.0000	NH-La-Lei 3N 1P V2	1	5,91
V-stamped <sup>1)</sup>	3	630	three pole switching	38635.0020	NH-La-Lei 3N 3P V2	1	5,78

<sup>1)</sup> For connecting terminals see Accessories

Inserted screw nut M12



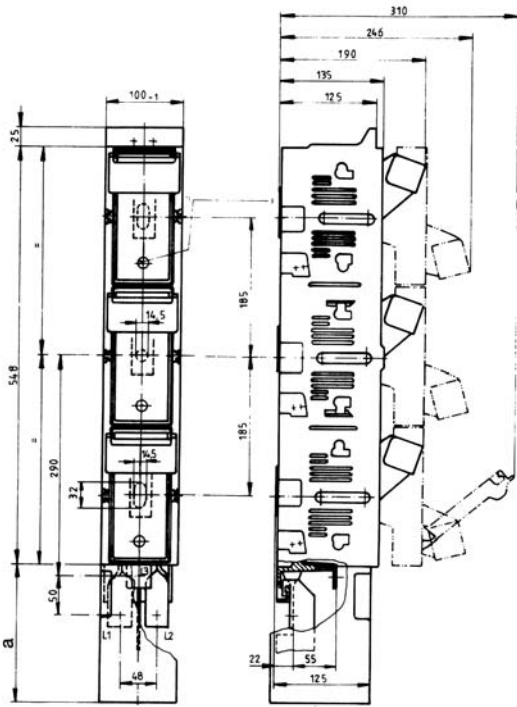
Threaded bolt M12



V-stamped

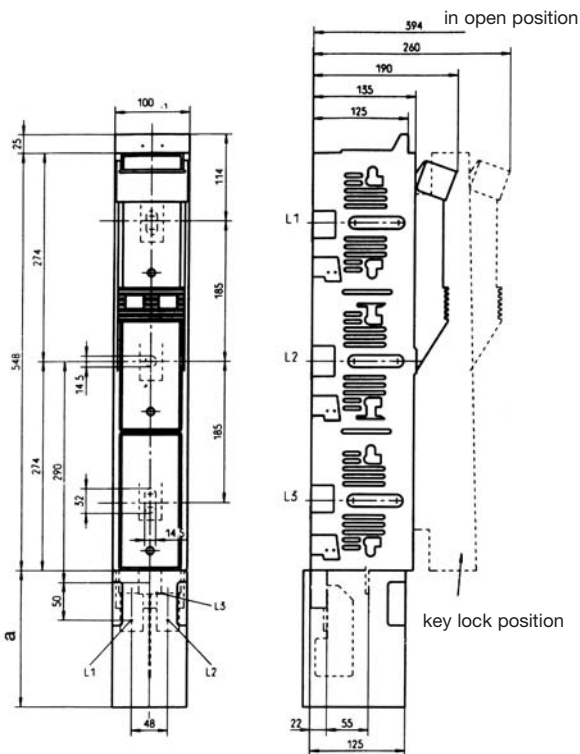


Single pole switching



Terminal	Dim. a
Inserted screw nut M12	180
V-stamped <sup>1)</sup>	140

Three pole switching



Terminal	Dim. a
Inserted screw nut M12	180
V-stamped <sup>1)</sup>	140

**NH Fuse-Switches size 3, 1-pole or 3-pole switching, series 2000 as 1000A-Incomming-Switch**

The NH-Switch 100 A is used as an incoming unit for busbar systems, when no protection with NH fuses, instead only a breaking point is requested. The switches will be delivered with special solid links 1000A with a low power dissipation.

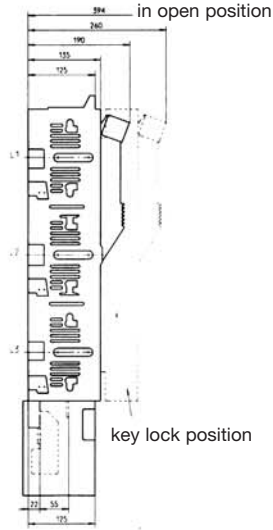
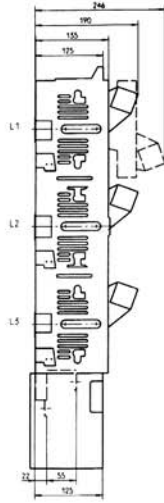
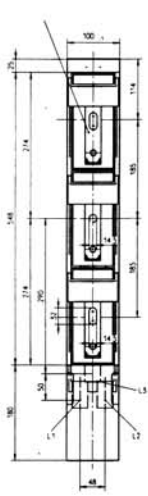
After activation the vario-key to turn-of-position the switch can be put in a secure pad log position. The switch can be secured through key logs against an unauthorized operating.

**NH-Switches 1000 A**

Description/Terminal	Size	Amps I <sub>n</sub>	Type	Order no.	Description	Pack	Weight in kg
Inserted screw nut M12, top/bottom	3	1000	single pole switching	38634.0260	NH-Tr-Lei 3N 1P 1000A S6	1	7,00
Inserted screw nut M12, top/bottom	3	1000	three pole switching	38634.0250	NH-Tr-Lei 3N 3P 1000A S6	1	7,25
M12 - Terminal back side	3	1000	single pole switching	38630.0530	NH-Tr-Lei 3N 1PH 1000A L6	1	5,97
M12 - Terminal back side	3	1000	three pole switching	38630.0540	NH-Tr-Lei 3N 3PH 1000A L6	1	7,00
M12 - sidewise branch connection	3	1000	single pole switching	38630.0140	NH-Tr-Lei 3N 1PL/R 1000A L6	1	5,99
M12 - sidewise branch connection	3	1000	three pole switching	38630.0150	NH-Tr-Lei 3N 3PL/R 1000A L6	1	5,84

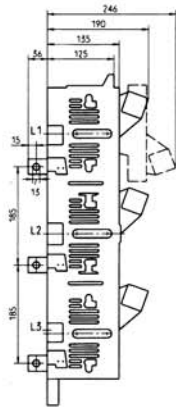
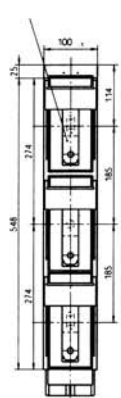
**top/bottom back connection**

window: red



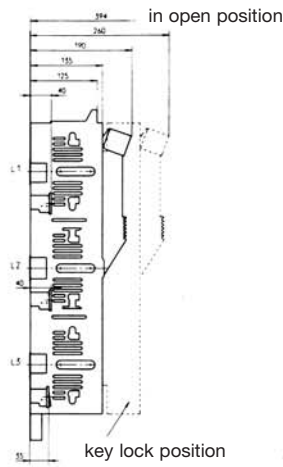
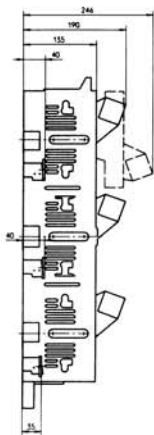
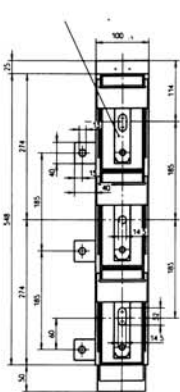
**rear back connection**

window: red



**sidewise back connection**

window: red



**NH Fuse-Switches series 2000**
**vertical design, for horizontal mounting**

The NH Fuse-Switches series 2000, vertical design size 00 are also in standard version suitable for horizontal mounting. The NH Fuse-Switches, vertical design, sizes 1 – 2 – 3 are special types and suitable for horizontal mounting as special types, are suited for horizontal mounting.

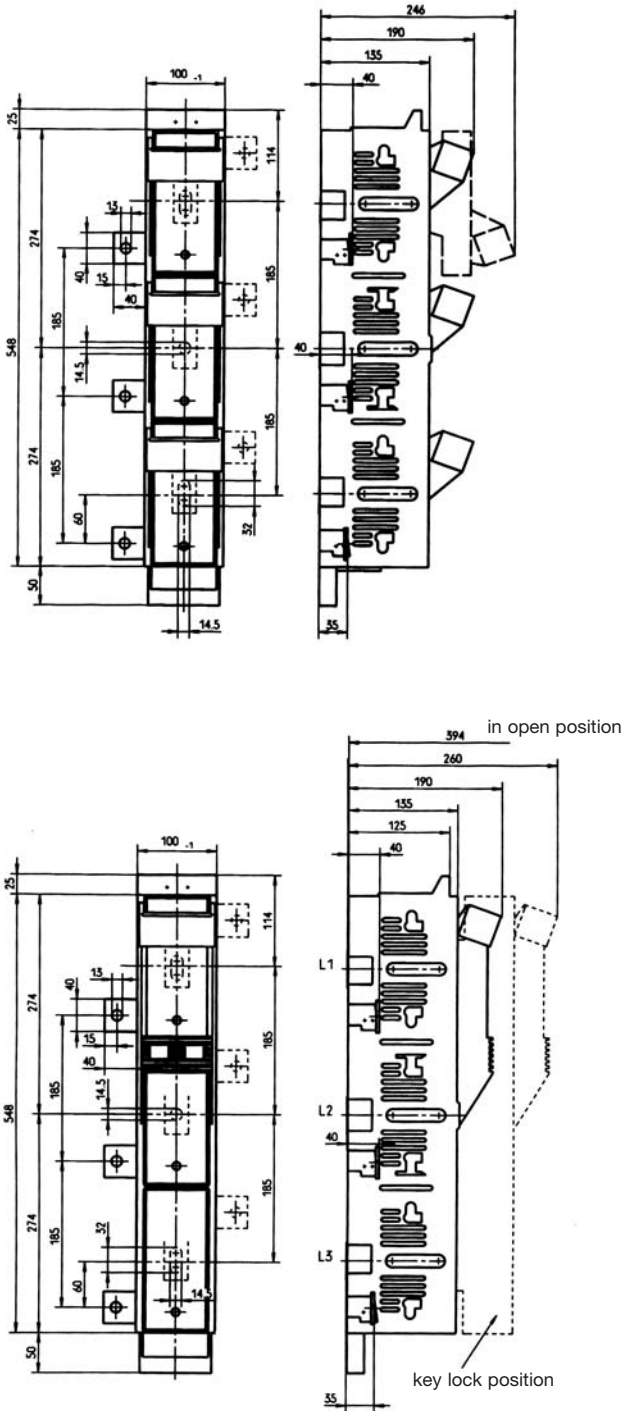
**NH Fuse-Switches for horizontal mounting**

Description/Terminal	Size	Amps I <sub>n</sub>	Type	Order no.	Description	Pack	Weight in kg
Inserted screw nut M12	1	250	single pole switching	38614.0180	NH-La-Lei 1N 1P WA S6	1	4,50
Inserted screw nut M12	1	250	three pole switching	38614.0170	NH-La-Lei 1N 3P WA S6	1	5,77
Inserted screw nut M12	2	400	single pole switching	38624.0180	NH-La-Lei 2N 1P WA S6	1	4,50
Inserted screw nut M12	2	400	three pole switching	38624.0170	NH-La-Lei 2N 3P WA S6	1	5,74
Inserted screw nut M12	3	630	single pole switching	38634.0180	NH-La-Lei 3N 1P WA S6	1	7,00
Inserted screw nut M12	3	630	three pole switching	38634.0170	NH-La-Lei 3N 3P WA S6	1	5,95

**NH Fuse-Switches series 2000**
**vertical design, with sidewise back connection**
**NH Fuse-Switches with sidewise back connection**

Description/Terminal	Size	Amps I <sub>n</sub>	Type	Order no.	Description	Pack	Weight in kg
Srew terminal M12, right/left	2	400	single pole switching	38620.0120	NH-La-Lei 2N 1PL/R L6	1	4,50
Srew terminal M12, right/left	3	630	single pole switching	38630.0120	NH-La-Lei 3N 1PL/R L6	1	5,09
Srew terminal M12, right/left	2	400	three pole switching	38620.0130	NH-La-Lei 2N 3PL/R L6	1	4,50
Srew terminal M12, right/left	3	630	three pole switching	38630.0130	NH-La-Lei 3N 3PL/R L6	1	4,49

NH Fuse-Switch, vertical design, with sidewise back connection, size 2 - 3: 400 A - 630 A





**NH Fuse-Switches, vertical design, size 1 – 2 – 3**

are constructed of uniform basic elements and vary only in their dimensions depending on the amperages resp. measurements of NH Fuse-Links. Switching is optional 1-pole or 3-pole and a cable connection at top or bottom is available. By parallel disconnecting of the NH Fuse-Links out of the switch contacts, the high breaking

capacity is achieved. An unintentional contact of live parts even in an open switch position is not possible. Many different versions as well as practical accessories give an optimum of applications to the user.

**NH Fuse-Switches, vertical design, size 1: 125 A**

Description/Terminal	Size	Amps I <sub>n</sub>	Type	Order no.	Description	Pack	Weight in kg
Srew terminal M10, bottom	1	250	single pole switching	38100.0005	NH-La-Lei 1 1PU GGL5	1	4,50
Srew terminal M10, top	1	250	single pole switching	38150.0005	NH-La-Lei 1 1PO GGL5	1	4,50
Srew terminal M10, bottom	1	250	three pole switching	38100.0025	NH-La-Lei 1 3PU GGL5	1	6,76
Srew terminal M10, top	1	250	three pole switching	38150.0025	NH-La-Lei 1 3PO GGL5	1	6,66

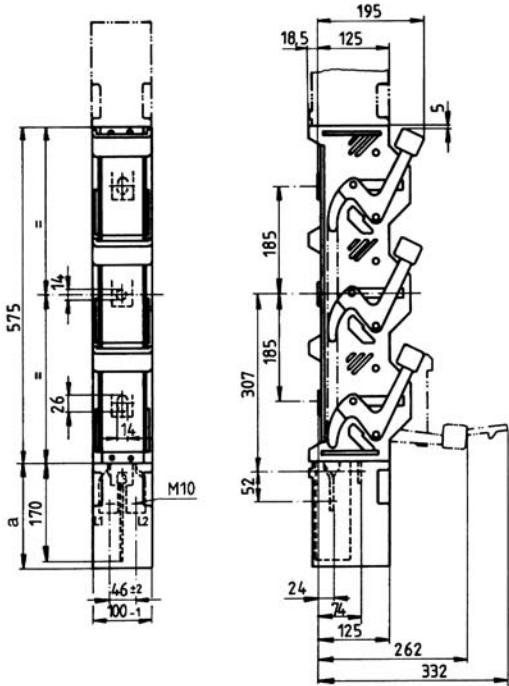
**NH Fuse-Switches, size 2: 400 A**

Description/Terminal	Size	Amps I <sub>n</sub>	Type	Order no.	Description	Pack	Weight in kg
Srew terminal M10, bottom	2	400	single pole switching	38200.0005	NH-La-Lei 2 1PU GGL5	1	4,50
Srew terminal M10, top	2	400	single pole switching	38250.0005	NH-La-Lei 2 1PO GGL5	1	4,50
Srew terminal M10, bottom	2	400	three pole switching	38200.0025	NH-La-Lei 2 3PU GGL5	1	6,76
Srew terminal M10, top	2	400	three pole switching	38250.0025	NH-La-Lei 2 3PO GGL5	1	6,76

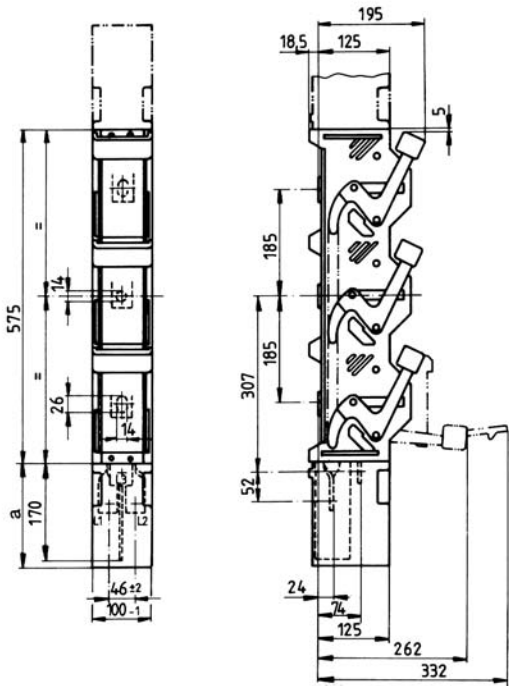
<sup>1)</sup> Other types on demand.

Terminal	Dim. a
Inserted screw nut M12	180
Threaded bolt M12	180
Screw terminal M10	180
V-stamped <sup>1)</sup>	140

NH Fuse-Switch, vertical design, size 1: 250 A



NH Fuse-Switch, vertical design, size 2: 400 A



NSL/NL

**NH Fuse-Switch size 3: 630 A**

Description/Terminal	Size	Amps I <sub>n</sub>	Type	Order no.	Description	Pack	Weight in kg
Inserted screw nut M12, bottom	3	630	single pole switching	38300.0005	NH-La-Lei 3 1PU GGL6	1	7,00
Inserted screw nut M12, top	3	630	single pole switching	38350.0005	NH-La-Lei 3 1PO GGL6	1	7,22
Inserted screw nut M12, bottom	3	630	three pole switching	38300.0025	NH-La-Lei 3 3PU GGL6	1	7,52
Inserted screw nut M12, top	3	630	three pole switching	38350.0025	NH-La-Lei 3 3PO GGL6	1	7,49

Other types on demand.

**NH Fuse-Switch, vertical design, size 4a: 1250/1600 A**

Description/Terminal	Size	Amps I <sub>n</sub>	Type	Order no.	Description	Pack	Weight in kg
Inserted screw nut M16, bottom	4a	1250 <sup>1)</sup>	single pole switching	38400.0000	NH-La-Lei 4a 1PU L8	1	16,71
Inserted screw nut M16, top	4a	1250 <sup>1)</sup>	single pole switching	38450.0000	NH-La-Lei 4a 1PO L8	1	16,40
Inserted screw nut 2 x M12, bottom	4a	1600 <sup>1)</sup>	single pole switching	38400.0020	NH-La-Lei 4a 1PU 1600 A L6	1	19,00
Inserted screw nut 2 x M12, top	4a	1600 <sup>1)</sup>	single pole switching	38450.0020	NH-La-Lei 4a 1PO 1600 A L6	1	19,00

<sup>1)</sup> Other types on demand.

1600 A possible with Fuse-Links up to a rated power dissipation of 140 W.

When several units of size 4a have to be installed side-by-side, the distance between has to respect the dimensions of connecting parts.

M16

2 x M12

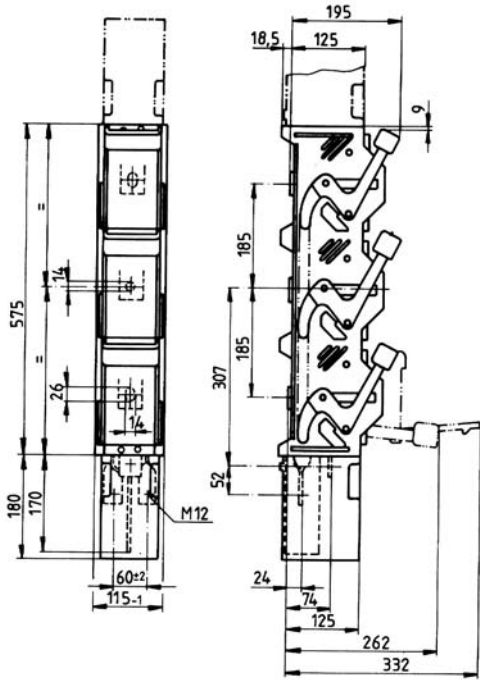

**NH Fuse-Switches, vertical design, with coupling a system**

These versions have been designed to connect two busbar systems of 185 mm centre distance.

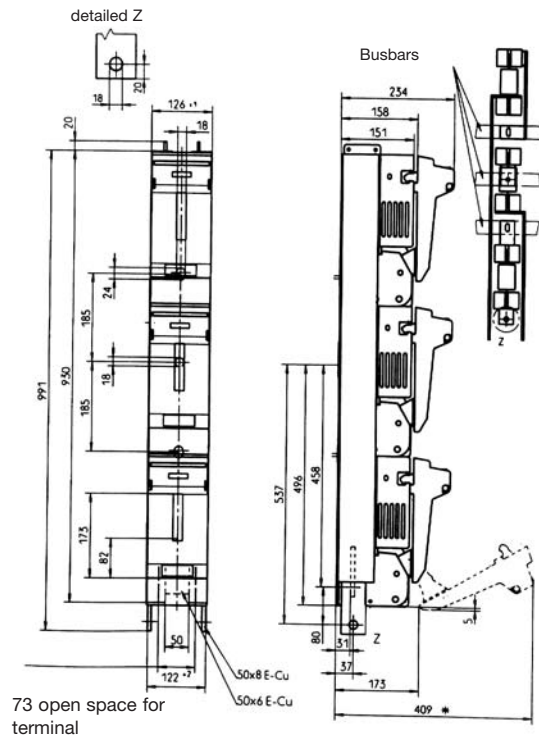
**NH Fuse-Switches with coupling system**

Description	Size	Amps I <sub>n</sub>	Type	Order no.	Description	Pack	Weight in kg
coupling system	3	630	single pole switching	38630.0560	NH-LA-LEI 3N 3P KL1	1	7,00
coupling system	3	630	single pole switching	38630.0590	NH-LA-LEI 3N 3P KL2	1	5,04
coupling system	4a	1250	single pole switching	38400.0260	NH-La-Lei 4a 1P KL1	1	19,00

NH Fuse-Switch, vertical design, size 3: 630 A

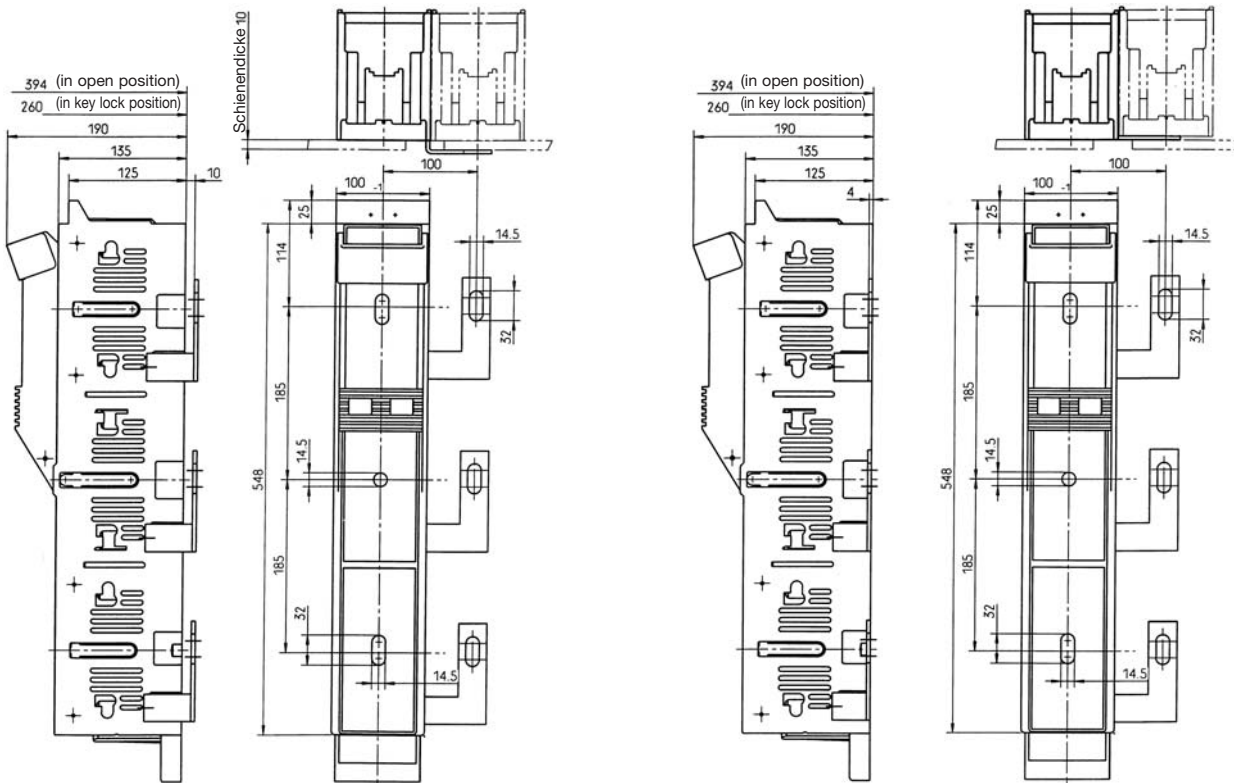


NH Fuse-Switch, vertical design, size 4a: 1250/1600 A



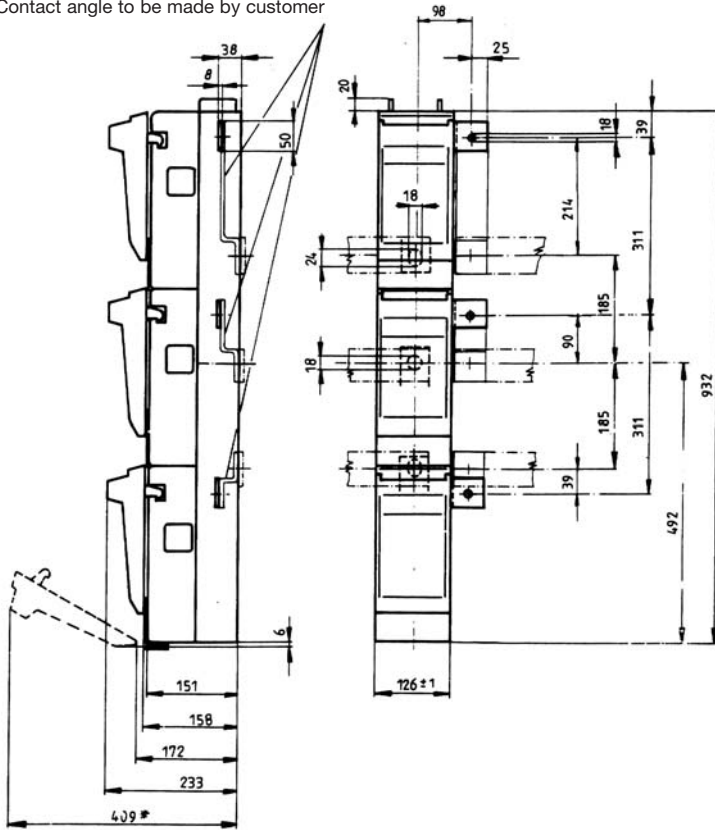
\* for removal of lid 425 mm is assential

NH Fuse-Switch, size 3, 3-pole switching, with coupling system



**NH Fuse-Switch, vertical design, size 4a: 1250 A  
 with coupling system**

Contact angle to be made by customer



**NH Fuse-Switches, vertical design, size 1 - 3, series 2000 with contact hooks**

- Direct busbar mounting without drilling for 5-10 mm busbars
- Busbars width up to 120 mm
- Fast assembly and adjustment under voltage
- Hooks are pre-assembled for terminal side on bottom
- Hooks could be easily changed for terminal side on top

**NH Fuse-Switches Size 1: 250A**

Description	Size	Amps I <sub>n</sub>	Type	Order no.	Description	Pack	Weight in kg
Srew terminal M12	1	250	1-polig	38614.1230	NH-La-Lei 1N 1P Bh S6	1	4,50
Srew terminal M12	1	250	3-polig	38614.1240	NH-La-Lei 1N 3P Bh S6	1	6,25
Threaded bolt M12x30	1	250	1-polig	38612.1230	NH-La-Lei 1N 1P Bh B6	1	4,50
Threaded bolt M12x30	1	250	3-polig	38612.1240	NH-La-Lei 1N 3P Bh B6	1	4,50
V-stamped <sup>1)</sup>	1	250	1-polig	38615.1230	NH-La-Lei 1N 1P Bh V2	1	4,50
V-stamped <sup>1)</sup>	1	250	3-polig	38615.1240	NH-La-Lei 1N 3P Bh V2	1	4,50

**NH Fuse-Switches Size 2: 400A**

Description	Size	Amps I <sub>n</sub>	Type	Order no.	Description	Pack	Weight in kg
Srew terminal M12	2	400	1-polig	38624.1230	NH-La-Lei 2N 1P Bh S6	1	4,50
Srew terminal M12	2	400	3-polig	38624.1240	NH-La-Lei 2N 3P Bh S6	1	4,50
Threaded bolt M12x30	2	400	1-polig	38622.1230	NH-La-Lei 2N 1P Bh B6	1	4,50
Threaded bolt M12x30	2	400	3-polig	38622.1240	NH-La-Lei 2N 3P Bh B6	1	4,50
V-stamped <sup>1)</sup>	2	400	1-polig	38625.1230	NH-La-Lei 2N 1P Bh V2	1	4,50
V-stamped <sup>1)</sup>	2	400	3-polig	38625.1240	NH-La-Lei 2N 3P Bh V2	1	4,50

**NH Fuse-Switches Size 3: 630A**

Description	Size	Amps I <sub>n</sub>	Type	Order no.	Description	Pack	Weight in kg
Srew terminal M12	3	630	1-polig	38634.1230	NH-La-Lei 3N 1P Bh S6	1	7,00
Srew terminal M12	3	630	3-polig	38634.1240	NH-La-Lei 3N 3P Bh S6	1	7,00
Threaded bolt M12x30	3	630	1-polig	38632.1230	NH-La-Lei 3N 1P Bh B6	1	7,00
Threaded bolt M12x30	3	630	3-polig	38632.1240	NH-La-Lei 3N 3P Bh B6	1	7,00
V-stamped <sup>1)</sup>	3	630	1-polig	38635.1230	NH-La-Lei 3N 1P Bh V2	1	7,00
V-stamped <sup>1)</sup>	3	630	3-polig	38635.1240	NH-La-Lei 3N 3P Bh V2	1	7,00

<sup>1)</sup> without clamps, for order clamps see chapter **NZ**

**NH Fuse-Switches, vertical design for 630kVA applications.**

Please contact us for the technical documentation.

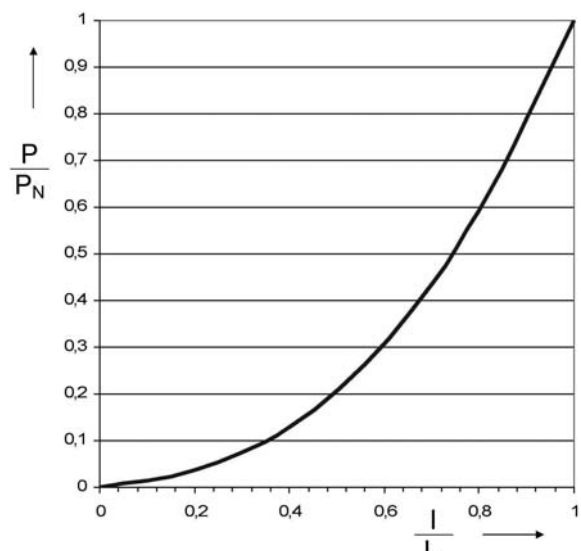
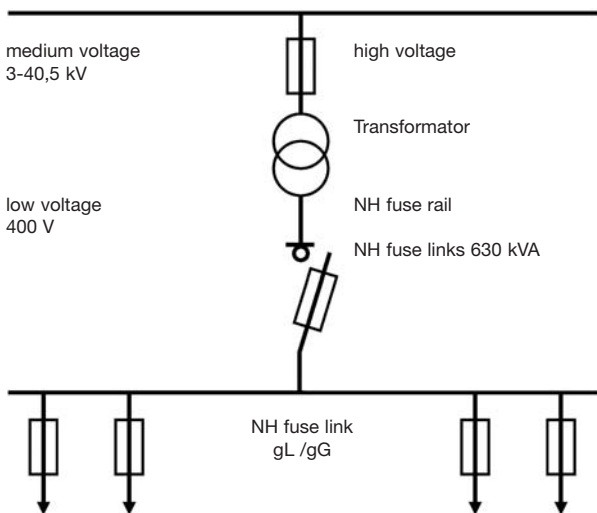
**Special features are:**

- rated power 630 kVA by AC 400V
- robust construction and thermally high pressure plastic structure material
- extreme switching value thru parallel disconnection
- connections variable with exit on top or at bottom and also on the back side.

Available as well is the 630kVA fuse switch size 3.

**NH Fuse-Switches Size 3: 630kVA**

Description/Terminal	Size	kVA	Type	Order no.	Description	Pack	Weight in kg
M12, bottom	3	630	single pole switching	38300.1235	NH-La-Lei 3 1PU 630kVA VE SM ST GG L6	1	5,60
M12, top	3	630	single pole switching	38350.1235	NH-La-Lei 3 1PO 630kVA VE SM ST GG L6	1	7,12
Inserted screw M12, back side	3	630	single pole switching	37374.1465	NH-La-Lei 3 1PH 630kVA GG S6	1	7,00
M12, bottom	3	630	three pole switching	38300.1275	NH-La-Lei 3 3PU 630kVA VE SM ST GG L6	1	7,29
M12, top	3	630	three pole switching	38350.1275	NH-La-Lei 3 3PO 630kVA VE SM ST GG L6	1	7,32
Inserted screw M12, back side	3	630	three pole switching	38374.1495	NH-La-Lei 3 3PH 630kVA GG S6	1	7,00



**630 kVA NH Incoming-Fuse-Switch-Disconnecter with special terminal block**

**Utilisation:**

As incoming Fuse-Switch in low-voltage distribution - panels of transformer stations up to 630 kVA.

**Advantages:**

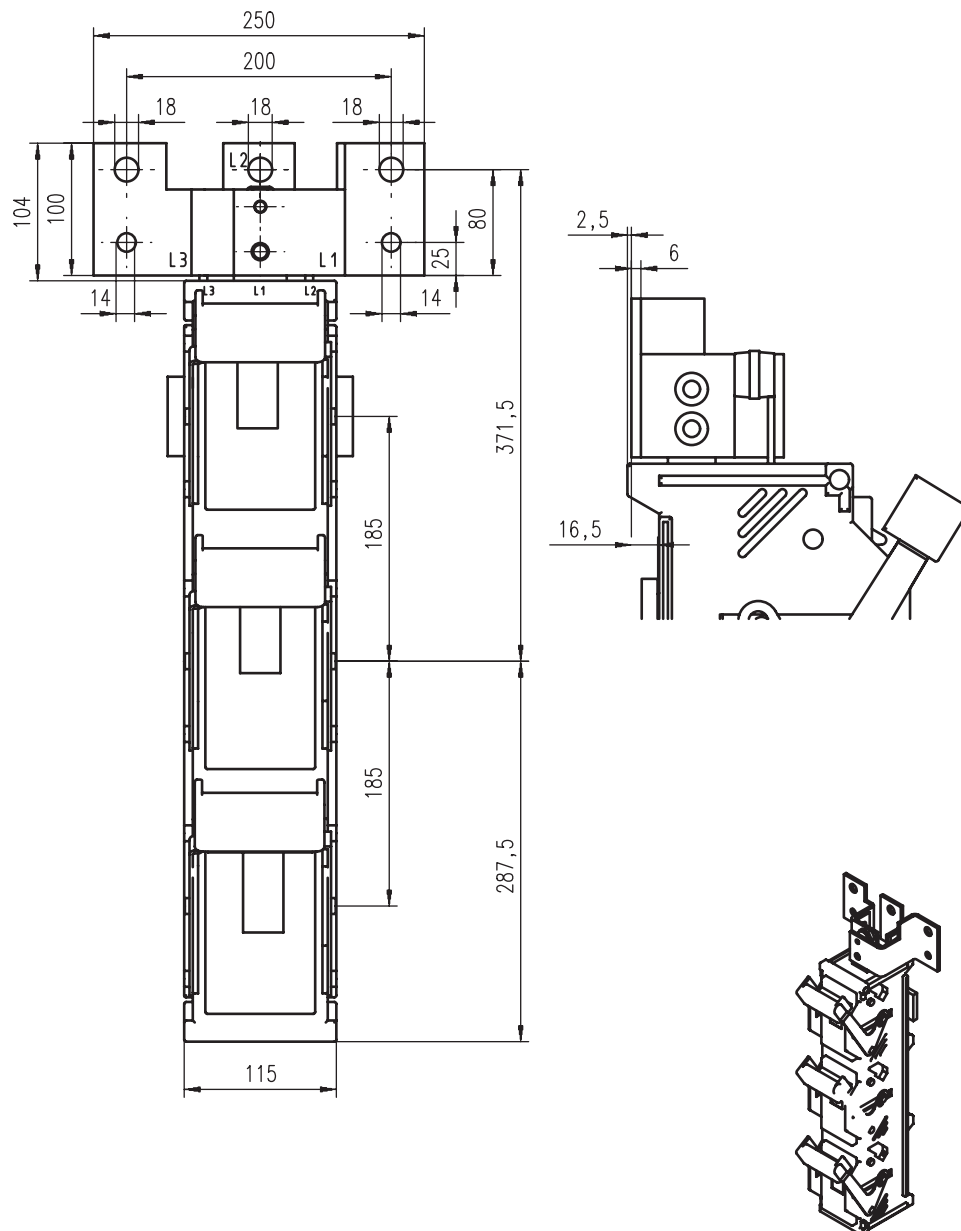
Terminal for busbars up to 60 mm width by usage of special terminals

Avoidance of crossings between cables or busbars to secondary contacts of transformers due to mirrored terminals L1/L3

Easy design and guaranteed compliance with prescribed air and creepage distances by fixed distances between the phases.

High electro dynamical stability due the extremely strong contact terminals. Reliable thermal operating safety at alternating ambient conditions due to increased width of Fuse-Switch-Disconnecter of 115mm.

Description	Size	kVA	Type	Order no.	Description	Pack	Weight in kg
Special terminal for busbar 60 mm, 3-pole switching, terminal top	3	630	three pole switching	38350.1595	NH-LA-LEI 3 3PO 630KVA SV L8 (L6)	1	7,00



NSL/NL



**NH Fuse-Switches size 1/2, 1-pole switching, series EKDEO**

**NH Fuse-Switches, series EKDEO offers a lot of specific features for the power supply business.**

- Easy voltage test directly on the contact knife of the NH fuse-link.
- Easy Current measurement

- Insertion of a pickapack-Fuse-Switch
- Working with earthing cartridge
- 150 mm installation depth for extremely flat cabinets

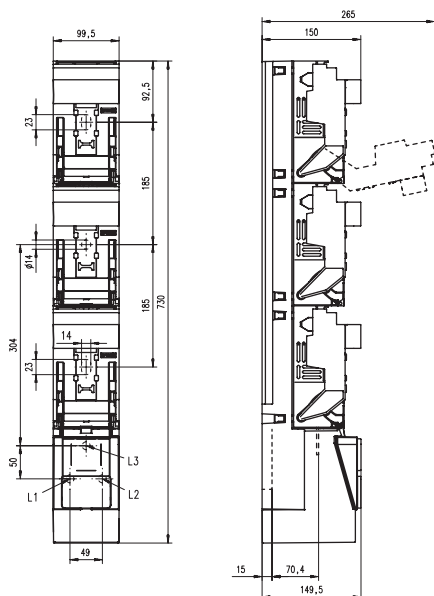
**Technical Data acc. VDE 0660 T107 / IEC/EN 60947-3**

For NH Fuse-Links acc. VDE 0636 T 201		Size	1/2
Rated operational current I <sub>e</sub> *		A	400
Conventional free air thermic current I <sub>th</sub>		A	400
Rated operational voltage U <sub>e</sub>		V	690
Rated insulation voltage U <sub>i</sub>		V	800
Rated impuls withstand voltage U <sub>imp</sub>		kV	8
Rated conditional short circuit current (when protected by NH Fuse-Links)		kA	50
Utilization category VDE 0660 T107 / EN / IEC 60947-3		U <sub>e</sub> =400 V AC U <sub>e</sub> =690 V AC U <sub>e</sub> =440 V DC	AC-22B AC-21B DC-21B
Mechanical durability		Cycles	1600
Rated duty		Uninterrupted duty	
Permissible ambient temperature		°C	-25 up to +55
Degree of protection DIN/EN 60529 / VDE 0470 T1		IP	2x
Tightening torque (recommend)	Busbar	Busbar connecting	32 Nm
		Hook connecting	20 Nm
	Cable connection	Terminal screw M12	32 Nm
		V2N-clamp	30 Nm
	V2 MD-Clamp	25 Nm	
Maximum power dissipation of the NH Fuse-Links		P <sub>v</sub> max.	34 W

\* When using gR-Fuse-links (VDE 0636/40) in our NH Switches please ask for information. Engineering progress is a continuous process for us. All information and data may therefore be changed without notification.

**NH Fuse-Switches size 1/2, 1-pole switching, series EKDEO**

Description	Size	Amps I <sub>n</sub>	Order no.	Description	Pack	Weight in kg
Inserted screw nut M12	1/2	400	38664.0000	EKDEO 1/2 1P S6	1	3,77
Threaded bolt M12x30	1/2	400	38662.0000	EKDEO 1/2 1P B6	1	3,77
V-stamped (Clamps not attached)	1/2	400	38665.0000	EKDEO 1/2 1P V2	1	3,77
V2N-stamped (Clamps not attached)	1/2	400	38665.0470	EKDEO 1/2 1P V2N	1	3,77



#### CT-Adapter kit for outgoing terminal of NH Fuse-Switch-Rail

A continuous measurement of the operational currents needs an arrangement of current transformers in each outgoing line. In most cases the ct's are mounted between busbars and the switches.

#### With the kit you have the solution.

- Ideal for all application with-out space for ct's between busbar and switch.
- Cable connection with calbel lug direct on current transformer
- Easy access to current transformers and readability of type plate without removal of the switch.
- Re-fitting to all standard Fuse-Switches, vertical design, size 1-3, series 2000 with inserted screw nut.
- Very easy access enabled change of ct's without removal of the NH Fuse-Switch and without de-energizing of substation.

#### Wandleranbausatz für Abgangsseite NH-Sicherungs-Lastschaltleiste

Description	Size	Amps I <sub>n</sub>	Type	Order no.	Description	Pack	Weight in kg
Adapter kit current transformers for NSL 1-3 / series 2000, incl. long terminal cover	1-3			36324.0010	Wandleranbau an NH-LA-LEI 1-3N	1	2,00

#### Special connecting devices

- Safety contacting of -2 x 240 mm<sup>2</sup>  
- 3 x 150 mm<sup>2</sup>
- Free access to connecting terminals
- High stability also during short circuit
- Low transition resistances
- Flexible application by convenient accessory package
- Protection against touch by extended terminal cover

#### Special connecting devices for NH Fuse-Switches vertical design

Description	Size	Amps I <sub>n</sub>	Type	Order no.	Description	Pack	Weight in kg
Connecting unit 2 x 240 mm <sup>2</sup> for series NTSL and 2000	1-3		Connecting parts for L1, L2 and L3, 6 pcs. screws M12 + washers	36302.0010	ANSCHLUSSEINHEIT 2X240 FÜR NTSL U. R2000	1	2,30
Connecting unit 3 x 150 mm <sup>2</sup> for series 2000	1-3		Connecting parts for L1, L2 and L3, 9 pcs. screws M12 + washer and 9 pcs. cable lugs 12-150mm <sup>2</sup>	36289.0010	ANSCHLUSSEINHEIT 3X150 NUR FÜR R2000	1	2,30
Terminal cover 280 mm length	1-3		-	82076.0100	ANSCHLUSSRAUMAB-DECKUNG AK10	1	0,15

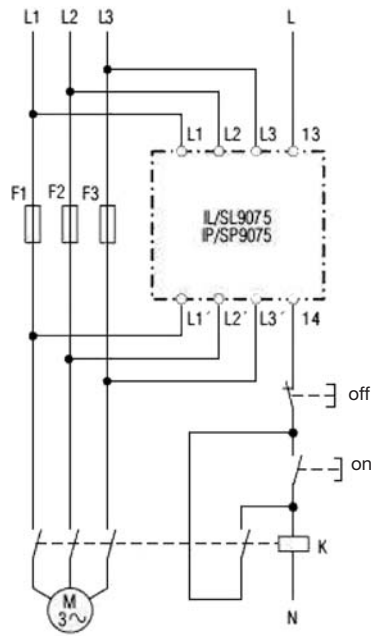
**Electronic Fuse-Monitoring - Size 00**

- According IEC /EN 60 255  
 DIN VDE 0435-303  
 For AC 380 – 415 V
- Useable for all NH Fuse-Switches vertical design size 00 and all types of fuses
- Mounting of the Fuse-Monitoring separately on a supporting rail
- Short-circuit-proof cable connection (2,5 mm<sup>2</sup>) of all phases from fuse-monitoring to the busbar, also to the outgoing cable terminals of the Fuse-Switch vertical design
- Contacting with 6 plugs, suitable or M8. Connection of the cables using flat plugs 6,3 mm.
- 2 LED-indicators to control the actually state of the fuses

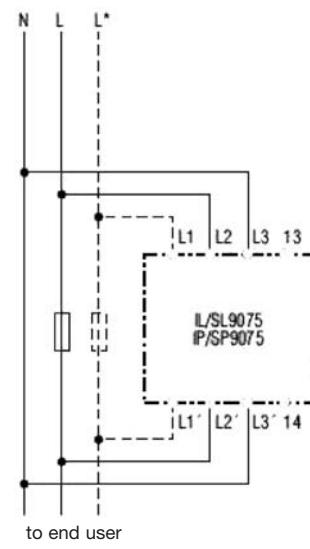
**Electronic Fuse-Monitoring for NH Fuse-Switches vertical design - Size 00**

Description	Size	Amps I <sub>n</sub>	Type	Order no.	Description	Pack	Weight in kg
Electronic Fuse-Monitoring	00			36716.0010	ESÜ FÜR NH-LA-LEI 00	1	0,6

Fuse-monitoring in 3-phase-network



Fuse-monitoring in AC-network



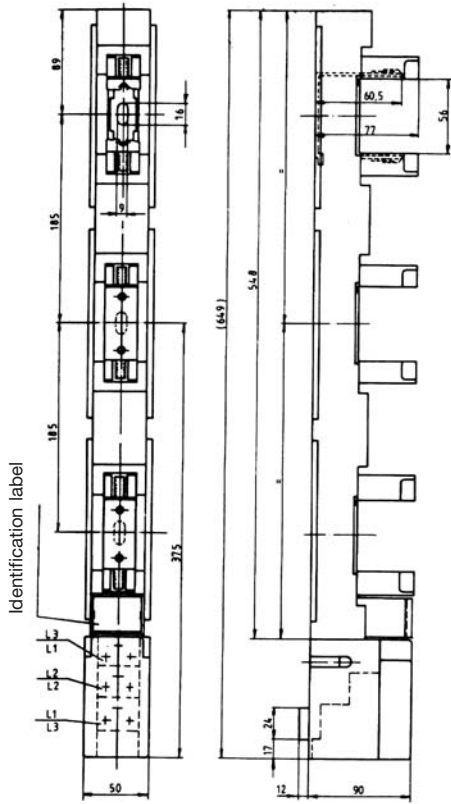
**NH Fuse-Rails, sizes 00 - 3 acc. to IEC 60269 - 2 - 1**

are protected against accidental access to live parts by means contact covers acc. BGV A3. All insulating parts are made of halogen-free, flame retardant polymer have excellent high temperature performance.

**NH Fuse-Rails, size 00 - 3, with contact- and terminal cover**

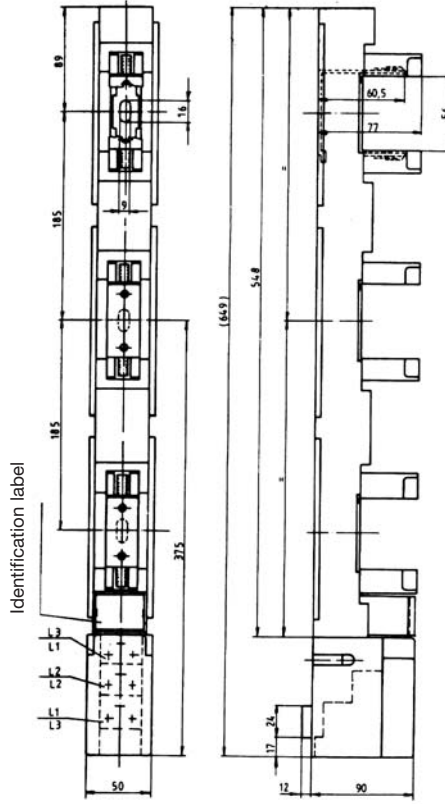
Description	Size	Amps I.	Order no.	Description	Pack	Weight in kg
<b>With terminal and contact cover, Flat terminal M8 (screw M8)</b>	00	160	38550.0020	NH-LEI 00N SH G4	1	0,74
<b>With terminal and contact cover, Multiple use terminal (screw M8)</b>	00	160	38570.0020	NH-LEI 00/185 SH U5	3	1,42
<b>With terminal and contact cover, V2N-stamped (clamps not attached)</b>	00	160	38575.0600	NH-LEI 00/185 SH VK V2N	2	1,97
<b>Inserted screw nut M12, Type EDURO</b>	½	400	38864.0020	NH-LEI 1-2 SH S6	1	2,41
<b>V2N-stamped (Clamps not attached), Type EDURO</b>	½	400	38865.0020	NH-LEI 1-2 SH V2N	1	2,22
<b>Inserted screw nut M12</b>	3	630	38954.0020	NH-LEI 3N SH S6		
<b>V2N-stamped (Clamps not attached)</b>	3	630	38955.0020	NH-LEI 3N SH V2N	1	5,00

NH Fuse-Rails size 00/100: 125/160 A



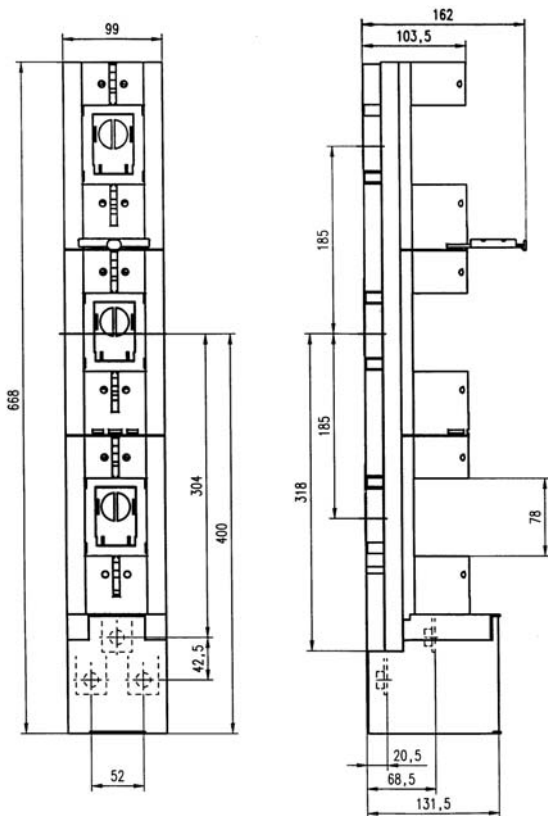
with contact- and terminal cover

NH Fuse-Rails size 00/185



with contact- and terminal cover

**Eduro**



## Accessories Technical data for NH Fuse-Switches and Fuse-Rails, vertical design

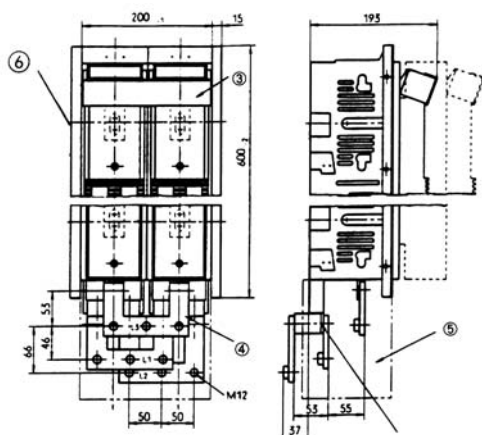
### Accessories for NH Fuse-Switches

Description	Type	Order no.	Description	Pack	Weight in kg
Carrier for identification label	00N	31122.0100	INFOTRÄGER NH-LA-LEI 00N	1	0,01
Twinning set for parallel operation	00N	31187.0100	VERBINDUNGSBLEND LA-LEI 00N	1	0,05
Terminal cover 140 mm for V-clamps	1-2-3 R2000, NTSL	31319.0100	ANSCHLUSSRAUMABDECKUNG AK6	1	0,10
Terminal cover 140 mm	1-2-3 R2000, NTSL	31319.0200	ANSCHLUSSRAUMABDECKUNG AK3	1	0,15
Insulating cap V2N	V2N	31516.0100	ISOLIERKAPPE V2N	1	0,01
Protection vs. power theaf	00IN	31559.0100	STROMDIEBSTAHLSICHERUNG LA-LEI 00IN	1	0,01
Carrier for identification label for clip-mounting onto housing of the Fuse-Switch Size 00	00IN	31568.0100	INFOTRÄGER LA-LEI 00IN	1	0,01
Terminal-cover for NH Fuse-Switches	EDURO	31605.0100	ANSCHLUSSRAUMABDECKUNG LEI 1-2	1	0,01
Insulating cap V2 MD	V2 MD	31607.0100	ISOLIERKAPPE V2 MD	1	0,01
V2N-clamp 2 x 50-185 <sup>2</sup> sm/2 x 70-240 <sup>2</sup> se	1-2-3	36025.0050	1 SATZ V-KLEMME 2X 50-185 SM MIT LASCHE	1	
V-clamp 35-185 <sup>2</sup> sm/50-240 <sup>2</sup> se	V	36025.0060	1 SATZ V-KLEMME 35-185 SM V2	1	0,23
Contact cover (1 Set = 3 pairs)	00N	36034.0010	1 SATZ KONTAKTABDECKUNG NH-LEI 00N		
Adjusting frames (1 set = 2 pcs.) to adjust longitudinal difference between NH Fuse-Switches size 00 and size 1 - 3	00N	36034.0020	1 SATZ AUSGLEICHSBLENDE	1	0,06
Twin adapter 100/185	00IN/00N	36035.0010	DOPPELADAPTER 185/185	1	0,80
Mono adapter for the 185 mm busbar system	00IN/00N	36035.0020	EINFACHADAPTER 100/185	1	0,47
Contact hooks (for mounting without drilling) (1 set = 3 pieces)	00N, 00/185	36036.0010	1 SATZ KONTAKTHAKEN	1	0,08
Mono-adapter for 60 mm busbar centre distance	00N	36039.0010	EINFACHADAPTER 100/60	1	0,28
Nameplate (with threads) 45 x 17 mm	00N, 00IN, 00/185, R2000, NTSL,	36040.0010	BEZEICHNUNGSSCHILD SCHRAUBBAR	1	0,01
Mounting hooks (1 Set = 2 pieces)	00IN, Reihe 2000	36048.0010	MONTAGEHAKEN 1 SATZ	1	0,01
Claw clamp M12 for 1 set (3 pieces) M12 for 50 - 150 mm <sup>2</sup> se	1-2-3 R2000, NTSL	36063.0010	ANSCHLUSSKLEMMEN 50-150 SE FÜR S6 1 SATZ	1	0,29
Blank panel cover 100 mm width	1-2-3 R2000, NTSL	36102.0020	LEERFELDABDECKUNG 100/185	1	0,10
Side frame	1-2-3 R2000, NTSL	36104.0010	1 SATZ BLENDSTREIFEN LA-LEI 1-3N	1	0,10
Twin-adapter for 185 mm busbar centre distance with side protection	00N	36105.0020	DOPPELADAPTER 100/185 BG	1	1,00
Terminal cover for parallel switch	1-2-3 R2000	36106.0030	ANSCHLUSSRAUMABDECKUNG	1	0,10
Micro switch for position indicating	1-2-3 R2000	36107.0010	MIKROSCHALTER FÜR SCHALTZUSTANDSANZEIGE	1	0,10
Distance bolts for height adjusting (1 Set = 3 pcs.)	1-2-3 R2000, NTSL	36110.0010	1 SATZ DISTANZSTÜCKE M12	1	0,10
Blank panel cover 50/185 for twin adapter	00/185	36119.0010	LEERFELDABDECKUNG 50/185	1	0,10
Blank panel cover 50/100 für twin adapter	00N	36119.0020	LEERFELDABDECKUNG 50/100	1	0,10
MP-Connecting lug	00N, 00/185	36125.0010	MP-DOPPELANSCHLUSSSCHIENE	1	0,10
Cover for NH-Lei 00/185	00/185	36130.0010	ABDECKUNG LEI 00/185	1	
Nameplate 70 x 45 mm	1-2-3 R2000	36133.0010	BEZEICHNUNGSSCHILD LA-LEI 1-3N	1	0,01
PEN connection with lug, V2N-clamp 35-240 mm <sup>2</sup> sm / 35-300		36138.0010	MP-ANSCHLUSSEINHEIT V2N 240 SM	1	0,10
V2N-clamp 35-240 sm / 35-300 se	00-1-2-3	36148.0010	1 SATZ KLEMME V2N 240SM	1	0,10
Terminal connecting set for 2 x M8	00/185	36226.0010	T-STÜCK 00/185	1	0,25
Identification label for clip-mounting on carrier or terminal cover	00IN	36233.0010	BEZEICHNUNGSSCHILD LA-LEI 00IN	1	0,05
Identification label (with threads) for mounting onto adjusting frames	00IN	36234.0010	BEZEICHNUNGSSCHILD LA-LEI 00IN SCHRAUBB.	1	0,05
Twin adapter for the 185 mm busbar system	00IN	36235.0010	DOPPELADAPTER LA-LEI 00IN 100/185	1	1,00
Side frame	00IN	36236.0010	BLENDSTREIFEN NH-LA-LEI 00IN	1	0,10
Adjusting frames (1 set = 2 pcs.) to adjust longitudinal difference between NH Fuse-Switches Size 00 and size 1 - 3	00IN	36237.0010	AUSGLEICHSBLENDEN LA-LEI 00IN	1	0,05

## Accessories Technical data for NH Fuse-Switches and Fuse-Rails, vertical design

### Accessories for NH Fuse-Switches

Description	Type	Order no.	Description	Pack	Weight in kg
Pressure plates (1 set = 3 pcs.) for direct connection of cables 1,5 - 25 mm <sup>2</sup> or flat cable < 16 x 10 mm	00IN	36238.0010	DRUCKSTÜCKE LA-LEI 00IN	1	0,10
Pressure plates with contact prism (1 set = 3 pcs.) for direct connection of cables 1,5 - 95 mm <sup>2</sup>	00IN	36239.0010	DRUCKSTÜCKE U. PRISMEN LA-LEI 00IN	1	0,10
Contact hooks (1 set = 3 pcs.) for mounting without drilling on busbars	00IN	36240.0010	HAKEN LA-LEI 00IN	1	0,05
Terminal for parallel switching	1-2-3	36245.0010	ANSCHLUSSGARNITUR ZWILLINGS- LEISTE EFEN	1	0,20
Micro switch for position indicating	00IN, EKDEO	36252.0010	MIKROSCHALTER NH-LA-LEI 00IN	1	0,01
V2 MD-clamp 35-240 / 35-300 se	V2 MD	36298.0010	1 SATZ KLEMMEN V2 MD 240SM/RM	1	0,35
Carrier for identification label	EDURO	36301.0010	INFOTRÄGER LEI 1-2	1	0,01
Cover for NH Fuse-Switches	EDURO	36322.0010	ABDECKUNG LEI 1-2 EDURO	1	0,10
electronic fuse monitoring	00N, 00IN	36716.0010	ESÜ FÜR NH-LA-LEI 00	1	0,01
Contact hook (for busbar without drilling) 1 set = 3 pieces	EDURO	36931.0010	1 SATZ KONTAKTHAKEN EDURO	1	0,01
Frame for 00N/100	00N	40464.0100	BLENDRAHMEN GR.00N/100	1	0,10
Side frame 00N	00N	40465.0100	BLENDSTREIFEN GR.00N	1	0,10
Twinning set for parallel operation	1-2-3	45071.0100	VERBINDUNGSBLENDE LA-LEI 1-3N	1	
Pressure plate 1,5 - 25 mm <sup>2</sup> (1 Set = 3 pcs.)	00/185	83495.0100	DRUCKSTÜCKE GR.00/185 1 SATZ	1	0,10
Pressure plate with contact prism 2,5 - 70 mm <sup>2</sup> (1 Set = 3 pcs.)	00/185	83496.0100	KONTAKTPRISMEN GR.00/185 1 SATZ	1	0,10
Micro switch	00/185	85138.0100	MIKROSCHALTER TYP 1	1	0,01
V-clamp 35 - 70 sm	00/185	85246.0100	KLEMMME 35-70 SM	1	0,04



Terminal possibilities for each  
phase 3 cable lug 12-240°

removal of the impress nut on  
the terminal rail

- ③ **Connectingframe**  
45071.0100
- ④ **Terminal for parallel switch**  
36245.0010
- ⑤ **Terminal cover for parallel switch**  
36106.0030
- ⑥ **side frame**  
36104.0010



Accessories  
for NH Fuse-Switches and Fuse-Rails

Technical data

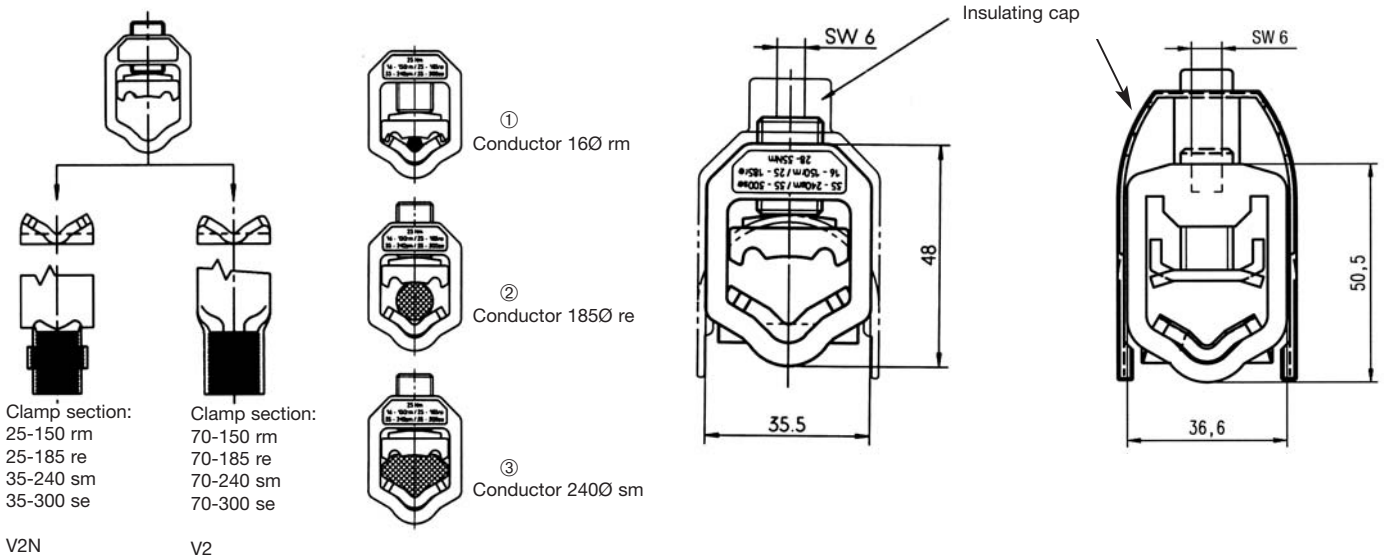
**V2N-/V2MD clamp for 25–300 mm<sup>2</sup> range**

By using the V2N-/V2MD clamp combination a new wide range can be covered. The V2N-clamp is compatible with the traditional V-stamped terminal and offers the possibility of connecting a cable-cross-section from 70 – 300 mm<sup>2</sup>. By using the device with a modified V-stamped terminal version (V2N) the clamp area will extend to 25–300 mm<sup>2</sup>.

Description	Cross section <sup>1)</sup>	Order no.
Clamp V2N (1 set = 3 pcs.)	25-150 rm ①	36148.0010
	25-185 re ②	
	35-240 sm ③	
	35-300 se ③	
Insulating cap	-	31516.0100

Description	Cross section <sup>1)</sup>	Order no.
Clamp V2 MD (1 set = 3 pcs.)	25-240 rm	36298.0010
	25-240 re	
	35-240 sm	
	35-300 se	
Insulating cap	-	31607.0100

<sup>1)</sup> This cross section is only possible when using switches with special V-shaped terminal.



Accessories  
for NH Fuse-Switches and Fuse-Rails

Technical data

**V-clamp**  
36025.0060



**V2N-clamp**  
36148.0010



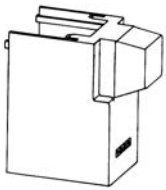
**V2MD-clamp**  
36298.0010



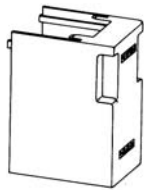
**Claw clamp**  
36063.0010



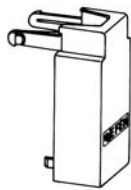
**Terminal cover**  
31319.0100



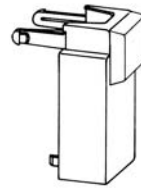
**Terminal cover**  
31319.0200



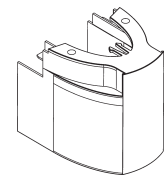
**Terminal cover**  
31104.0100



**Terminal cover**  
31334.0100



**Terminal cover**  
31605.0100



**Cover for NH-Lei 1-2**  
36322.0010



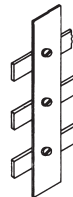
**Cover for NH-Lei 00/185**  
36130.0010



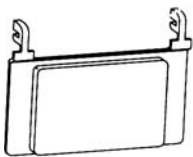
**Contact cover**  
36034.0010



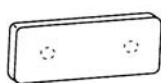
**Blank panel cover**  
36102.0020



**Nameplate**  
36151.0010



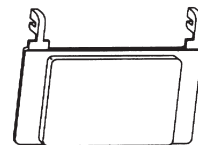
**Nameplate**  
36040.0010



**Nameplate**  
36065.0010



**Nameplate**  
36133.0010



**Contact hook**  
36036.0010



**Mounting hooks**  
36048.0010



**Carrier for identification label**  
36301.0010

